



The Quarterly Gazette

Senior Interhouse Debating Final Gathers a Crowd

This house strongly believes that AI will bring more harm than good to society.
Buckingham (Proposition) vs. Kensington (Opposition).

Buckingham established a strong and convincing argument in their opening statement. The dangers of AI for mental health and well-being; the possibility of major social change and unrest; and the obliteration of privacy under a AI controlled world, were presented eloquently and passionately. It was stressed how AI advancements could majorly displace workers and eliminate humans from many industries.

Kensington put down an equally informed and knowledgeable argument, presenting the many positive and profound advancements AI is capable of bringing to humanity. They acknowledged the need for strong regulations to facilitate and embrace AI as a powerhouse to bring positive changes to our society, which gave their opening speech a sophisticated elegance.

Both sides secondary statements provided further evidence and examples. Buckingham brought forth the question of morals and ethics in the use of AI and the importance of empathy and human decisions alongside technological advancements. The utter unknown of what a sentient AI could do gave the speech evocative power. Kensington countered Buckingham's hypothetical examples with the reality of human influence over AI at present. They negated the negatives with the overwhelming and overpowering positives, like helping in healthcare and therefore supporting human well-being massively. The importance of viewing AI through a scientific and rational lens, instead of one of hysteria. The judges and floor then gave provoking questions to both sides.

Kensington responded to questions by stressing the importance of regulation to create a symbiotic relationship with AI. They offered a new perspective that AI would redefine job roles and industries, not eliminate them. Impelling the audience to act, they said "Right here, right now, we have the

power to protect and enhance humanity." Kensington concluded with the empowered statement: "The real harm would be not seeing this opportunity" to bring more good to humanity.

Buckingham engaged and fully answers the questions asked, stressing the major differences AI technology has to other technological advancements. They gave provocative examples of how AI dangers are prevalent and currently existing today, for example in warfare and privacy. Powerfully, they compared the development of the nuclear bomb meant as a fore of good to end the war with the development of AI today, stressing the similar detrimental effects it could cause: "no difference between the nuclear arms race and an AI arms race." Buckingham concluded with the ruminating statement: "There is nothing that does so much harm than good intentions."

To much suspense, the Judges congratulated both houses before announcing the winner: Kensington! Well done to everyone who participated, especially to the Kensington girls of the final debate: Jemima, Elizabeth and Preethi.

-Sadie Wilson





The Quarterly Gazette

Festive Fun!

Christmas Quiz

1. In which country in the world is KFC traditionally eaten on Christmas day?
2. From which country does the Christmas tree originate from?
3. What is the Grinch's dog called?
4. There are 365 days in the year – which number is Christmas day?
5. What are the names of the original 8 reindeers?
6. What do Swedish children leave out for Santa?
7. How many Home Alone movies are there?
8. In Home Alone 2 who does Kevin run into the hotel lobby?
9. Which city is the birthplace of the 'ugly Christmas sweater' party?
10. Which company has made the largest gingerbread man?

See the back page for answers.

The first person to send us their results will win a sports hub voucher for when we come back to school in January! (email @gazette@gordons.school)



Gingerbread Mince Pies

Ingredients:

400g mincemeat

50g stem ginger

For the pastry:

250g plain flour

¼ tsp ground cinnamon

½ tsp ground ginger

125g cold unsalted butter

3 tbsp golden caster sugar

1 egg

STEP 1

For the pastry, tip the flour, spices and butter into a large bowl with a large pinch of salt. Rub together with your fingertips until the mix resembles fine breadcrumbs. Stir in the sugar. Add the egg and use a cutlery knife to mix everything until the ingredients start to clump together. Tip out onto a lightly floured work surface and knead briefly until you have a smooth dough. Or, pulse the ingredients together in a food processor. Shape into a disc, then wrap and chill for at least 30 mins.

STEP 2

Heat the oven to 190C/170C fan/gas 5. Mix the mincemeat with the ginger and syrup. Roll the pastry out on a lightly floured surface to a 3mm thickness. Stamp out 12 discs using an 8cm biscuit cutter and lightly press into a 12-hole cupcake tin.

STEP 3

Fill each pastry case with 1 tbsp of the mincemeat mixture. Re-roll the pastry scraps and stamp out 12 mini gingerbread people, then place one on top of each pie

STEP 4

Bake for 20 mins, or 30 mins from frozen. Leave to cool in the tin for 5 mins, then lift out onto a wire rack to cool completely. Dust with icing sugar to serve.





The Quarterly Gazette

The Sixth-Form Dance off

After much anticipation as dances were choreographed, costumes were bought, and house parents were distracted by the loud music with practises at most lunch and dinners, the dance off exploded into action on Friday. Students and teachers gathered in the sports hall with high expectations of world-class entertainment, and they were not disappointed. Some truly technical masterpieces were displayed to the admiration of the audience; as well as lots of laughs from the dazzling costumes and enthusiastic characters.

Congratulations to the winners Windsor and Khartoum!



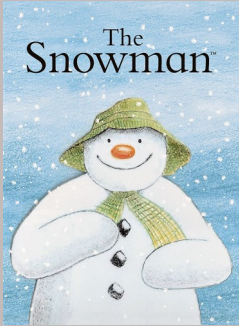


The Quarterly Gazette

Recent Recommendations

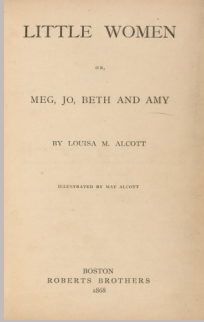
Film The Snowman

This 1982 animated Christmas classic is brought to life by its iconic soundtrack– cue screeching renditions of ‘we’re walking in the air’. The wordless animated tale of a boy and a snowman on Christmas eve is mystical and Christmassy.



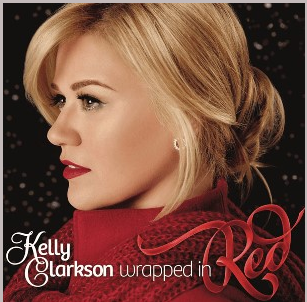
Book Little Women

This heartwarming coming of age tale has had a recent resurgence of popularity following the Greta Gerwig 2019 Film, however the novel itself remains a timeless exploration of girlhood, sisterhood and family, as well as a splash of the Christmas setting that is appreciated at this festive time.



Music Underneath the tree

From her 6th Studio album and first Christmas album, Kelly Clarkson’s single has established itself as a Christmas favourite.



Editor’s Note

In this last issue of 2023, and my final issue as editor, I would like to leave a final note.

This academic year, the school newspaper has continued its upwards momentum and we are grateful for the support from all our readers, consisting of staff, students, and parents. The Newspaper is an incredibly rewarding society here in school and we hope that this issue perhaps inspires any students reading to get involved next term!

This note also allows me the opportunity to formally announce that the wonderful and committed writer Sadie Wilson will be succeeding me as editor of the newspaper.

Wishing you a very merry Christmas holiday from us here at the Quarterly Gazette, and we hope to see you soon next year.

-Elizabeth Bailey.



Above is the very first edition of the Gazette, as a reflective visual of how far we have come.





The Quarterly Gazette



The Competition Results

Congratulations!

Thank you to all of the entries to the competition, and we hope that these will only continue to increase!

This issue's competition focused on the broad theme of 'change'. Keep an eye out for when the next competition launches, as there are **prizes** to be won!

The Results

Well Done to our winner of the first photography competition

Maisie Ho





The Quarterly Gazette



A Sweet Start to 'Sweet Charity'

Hannah was recently able to catch up with some of the main members of this year's school production of 'Sweet Charity'.

Sweet Charity is the big production taking place in January, right here, in Gordon's school. It involves 55 students from year 9 all the way up to year 13! I have had the opportunity to catch up with Mr Olden and Mr Stanworth, who are the key orchestrators in setting up in the production. I have also met the main character of the show, Charity, played by Alice Kermeen in year 13 who has had a lot to share about her experience performing in this year's fabulous show!

ALICE KERMEEN

How did you get your role?

We auditioned with an extract and the song *If My Friends Could See Me Now*, and I was lucky enough to be trusted with Charity, who is such a sweet, complex, funny, interesting, quirky character to play and her songs are such a joy to sing. Sweet Charity is such a fun musical and the whole cast is just so lovely, supportive, hardworking and talented.

What is different to this theatre production compared to the other ones you have been involved with in Gordons?

It's quite a classic production that not necessarily the younger generations, but the older generations would definitely have heard of. The way which Mr Olden has interpreted and how he is portraying it is quite interesting.

Sweet Charity is also one of the more jazzier musicals we have done because

Cy Coleman was a jazz pianist, so all his compositions has jazz influences – making the songs more fun to sing! Also, because the movements are inspired by

Bob Fosse, it's such an interesting dance form to explore, and in dances such as *Rich Man's Frug* it looks amazing because Bob Fosse is a genius, and because Miss Banks is choreographing it so beautifully.

How did you get into acting?

I always did singing from a young age, but it was when I went to Gordon's that I got involved in acting and drama. Through then getting a drama scholarship, I have been able to cultivate my passion for drama and acting, which is what I hope to pursue in the future. It has really been a journey in Gordon's school realising that I enjoy acting, as much as I do with singing.

What is your favourite thing about participating in theatre productions?

I think the family it creates and the bond between cast members because of the late hours of rehearsal, the long days and all the energy to make it the best we can. You form those bonds with people that are so strong because you've created something together.

Any closing thoughts?

Come watch the show! It is at the end of January and we're all so excited to perform it. We have put so much effort into the rehearsals and we have such a lovely cast. We hope that you as an audience will have just as much fun as we all are.

Quick fire questions with Mr Olden

What made you choose Sweet Charity?

I always like to choose something contrasting to the previous year's production in terms of style and story. I loved the big brass band musical score by Cy Coleman and on first read through of the show, I



loved the quirkiness of Charity and the fresh take on the traditional "love" story.

How have you found the process of directing this year's production?

It is always a huge undertaking starting a new show and with Sweet Charity it has been no exception. Working with the cast has been a lot of fun and I have loved how much responsibility some of our students have taken on and how trusting they have been in the process.

Are a range of people from all year groups participating in the production?

Yes. This year's production is the first year we have introduced Year 9s back into the main production. So we have 55 students from across Yr9-Yr13.

How would you describe Sweet Charity in three words?

Quirky, Stylish and Uplifting.





The Quarterly Gazette

Why should people come to see it?

Because of our students. I am so lucky to work with these students throughout the production process. They are genuinely incredible as people as well as performers.

MR STANWORTH

What is your role in directing the musical component of Sweet Charity?

My job is, number one, to make sure the chorists and soloists know their songs, and my job is also to assist Mr Olden, the director, and help him with all the musical aspects of the show. Further down the line, when it comes to the show itself, my job is to arrange bands, rehearse the bands to play the show, and then conduct them on the night, to make sure what the band is doing fits in with what the soloists and the chorists are doing on stage. I am going to be on stage myself throughout the whole production up on a platform apparently, **waving my bat on the rounds** to keep everything on time.

How have you found doing the production so far?

I really enjoy doing the productions because it is a big project. This is our third year where we have been able to do one every single year; we did *Beauty and the Beast* and *Made in Dagenham*. Each year we try to improve on what we have done in the previous years and learn from our previous experiences to try and make it better each year. It is a *long* process because we do the auditions in June and the production is at the end of January – making it a seven or eight month process altogether. The production is a big commitment, but I think it is really worth doing because the final effect is so impressive and it's just a great thing for many people to be involved in.

What's your favourite song from Sweet Charity?

My favourite song from the show is one that Alice (who plays Charity) sings – *Charity's soliloquy*. I like some of the other songs as well, there are some big chorus numbers;

Rhythm of Life is a good one. *Big Spender* is a very well-known song. So, there are some big chorus numbers, but I think I like *Charity's soliloquy* because it's got quite a few different sections to it. It starts as a bossa nova which is like a Brazilian style of rhythm and then it moves into a tango which is more of an Argentinian style. So, it is quite fun managing those different styles and hearing the song move through those different rhythms.

-Hannah Alon





The Quarterly Gazette



Recent Sports Here At School

The Duchess of Gloucester Cup

Well done to the both the 2nd VII Netball team for winning the Duchess of Gloucester Cup! There was some spectacular performances on show by both teams; but in the end Gordon's took a convincing win. The cup is a fantastic tradition, and with lots of the younger aspiring netballers watched the game, it was a great celebration of both schools and communities.

ly fantastic hockey on display, with some great goals from Luci, Bella and Amy. The next round will be played in the New Year, and the girls can't wait for the challenge.

-Sadie Wilson



3rd for ACE

After an incredible season, the ACE rugby team finished strong in their 3rd/4th playoff vs. Beechen Cliff School; winning 27-20. They have had some absolutely phenomenal performances and even topped the unbeaten Hartpurty College. It has been Gordon's rugby's most successful season to date; well done to all!



National Quarterfinals for Hockey 1st XI

With an amazing team performance, Hockey 1st XI took the win 4-0 against St. John's

Leatherhead to get through to the National Quarterfinals!

There was some tru-





The Quarterly Gazette



Keep your eyes peeled!

The Hockey 1st team will enter the U18 Hockey Spring Term league

The Netball 1st Team have the regional netball finals on Sunday 28th January

Friday 23rd Feb – U18 Gordon's School Floodlit 7s Invitational

Sunday 4th February – U16 Gordon's School Rugby 7s Invitational

The Quiz answers:

1. Japan
2. Germany
3. Max
4. 359
5. Comet, Cupid, Donner, Blitzen, Dasher, Prancer, Vixen, Dancer
6. Coffee
7. 6
8. Donald Trump
9. Vancouver
10. Ikea

