

# DAY AND RESIDENTIAL BOARDING

STUDENT  
HANDBOOK  
2026



## **CONTENTS:**

Boarding Charter	4
Character and Values	5
Accommodation	6
Accommodation – Residential Boarders	6
Accommodation – Day Boarders	6
Aerosols	6
Electrical Appliances	7
Devices	7
Damages	7
House Visiting	7
Searches for Illegal Items	8
An Active Life	9
Ball Games	9
Fitness Suite - In the Sports Hub	9
Saturday School	10
Appearance & Clothing	11
Body Piercing & Tattooing	11
Boots (for sport)	11
Hair (all students Y7-13)	11
Labelling	12
Uniform	12
All Students	12
Main School (Y7-11)	12
Sixth Form Students Only	13
Blazers-Off	14
Hoodies	14
Uniform from September Exeat to Easter	14
Uniform from Easter to September Exeat	15
Sports Kit	15
Ceremonial	16
Annual Inspection	16
Blues	16
Drill Practice (Marching)	16
Parades	16
Memorial Weekend	17
Communication	18
Absence (Day Boarders)	18
Leaving the School Site During the Day	18
Off-Games / P7 / PE	19
Post	19
Complaints	19
Bromcom, Sharepoint and Socs	20
Property	21
Mobile Phones	21

Mobile Phone Etiquette	22
Lost Property	22
Money	23
Passports	23
Residential Boarding	24
Roll Call	24
Curfew	24
Bed Times	24
Laundry	25
Leave-Out	25
Right Time, Right Place	27
Daily Routine	28
Break Time	28
Food	28
Leaving the School Site During the Day	29
On-site After Prep at Weekends	29
Out of Bounds Areas	29
Public Houses	29
Student Life	30
Internet	30
Prep	30
Prep on Friday 6.00 - 7.00pm	30
Rewards	31
Sanctions	31
School Detention Friday 5.00 - 5.45pm	32
Detention Daily at Lunch Times	32
Substance Abuse	32
Bicycles and E-Scooters	33
Driving	33
Pick-Up Times	33
Student Safety	34
Alarm - Fire Evacuation	34
Alarm - Lockdown	34
Bridge	34
Student Voice	35
Student Welfare	36
Reportit@	36
Bullying	36
Chapel	36
Prayer/Quiet Room	37
Child Protection & Safeguarding	37
Doctors/Dentists	37
Medical Issues	38
Medicines	38
Medical Centre Opening Times	39

In line with British Values of **Democracy**, **Rule of Law**, **Respect and Tolerance**, and **Individual Liberty**, the following are the principles upon which boarding at Gordon's School is based:

- 1** Each boarder has a 'voice' and where reasonable to do so boarders' views will be sought with regard to decisions that affect their environment, well-being and progress.

---

- 2** Each boarder agrees to abide by House rules and accept that there are, and should be, consequences if rules are broken. These rules should be fair and consistent across Houses and are recognised as a code that protects what we value as a community.

---

- 3** Regardless of ethnicity, religion, gender or (dis)ability, each boarder has the right to be able to work, relax and express their opinion free from abuse, intimidation, harassment, teasing and bullying. Boarders accept the right to express their opinions is not without boundaries and should not be knowingly hurtful.

---

- 4** There is equality of opportunity for all boarders and as boarders progress through the House they enjoy increasing liberty of choice, within the limits of School rules.





# EXPECTATIONS

YOU ARE REQUIRED TO SHOW AT ALL TIMES:



## COURTESY

Showing politeness and thinking of others before yourself.

## INTEGRITY

Being honest and doing the right thing, whether or not anyone is watching.

## DILIGENCE

Always working to the best possible standard, taking care in even smallest details.

## ENTHUSIASM

Approaching everything with a positive attitude, and enjoying what you do.

## RESILIENCE

Keeping going, even when it is difficult.  
Recovering when things go wrong.



## **ACCOMMODATION - RESIDENTIAL BOARDERS**

Dorms must be kept tidy and orderly at all times.

Beds in Residential Houses must be made in the morning and the room must be left in an acceptable state before leaving at 8.15am.

Posters and any other personal effects must be appropriate and non-offensive. Houseparents will make the final decision as to what is appropriate and acceptable.

Day Boarders are not allowed into sleeping areas without the permission of Houseparents.

## **ACCOMMODATION - DAY BOARDERS**

Sixth Form study rooms must be kept tidy and orderly at all times.

Posters and any other personal effects must be appropriate and non-offensive. Heads of Houses and Houseparents will make the final decision as to what is appropriate and acceptable.

## **AEROSOLS**

Aerosols are strictly banned in school and in all Day and Residential Houses. The only exception to this is when being used under staff supervision; eg before a Parade, in the Art Department etc.

## **ELECTRICAL APPLIANCES**

All appliances and devices which are to be plugged into electrical sockets in school, including Residential Houses, must be PAT-tested. Any new items brought into school during the year must be brought to the House Office for staff to record.

Students must not have any appliance with a heating element (eg kettles, toasters, rice-cookers, fan- heaters etc) in their rooms. This includes fridges and freezers. The only exception to this is a hairdryer or hair-straighteners.

Students must not have televisions or fridges in their dormitories or study rooms.

## **DEVICES**

Y7-10 students must not have electronic devices, including tablets or mobile phones, in their dormitories at any time unless with specific permission from a Houseparent. This rule extends to any washing or changing areas anywhere in the school, including Day House locker rooms, except when storing a tablet safely in a locker.

## **DAMAGES**

A room check and handover will be conducted at the start of the year. Damages, caused deliberately or by misadventure, must be paid for by the student or students responsible for the damage. In such cases, a charge will be raised by the Finance Office.

## **HOUSE VISITING**

Students, irrespective of gender, are not allowed into the respective Day House Common Rooms (on any floor) of other Houses during break and mealtimes. All students entering another House must sign in or make themselves known to a member of staff.

Each Residential House has a designated area for mixed-gender visits and socialising.

Sixth Form Day Boarders may visit study rooms in other Houses of the same gender at any time, with permission of the House staff. Male and female students wishing to study together, may do so in common rooms only with permission from House staff, or may use the Library.

No students from any other House are allowed into Residential House dormitories.

## SEARCHES FOR ILLEGAL ITEMS

Students may be asked to reveal the contents of bags or pockets. Where a student refuses this request, a parent, or in some cases the police, will be called to conduct the search.

Staff may conduct a search of any facility, desk, drawer or locker that belongs to the School without the student's permission. Where reasonable to do so, a student may be asked to be present during a search.





## **BALL GAMES**

Ball games can take place on the Front Field, or when supervised, on the Back Field and Astro Pitch. Balls may only be thrown, not kicked, on the Parade Square. Cricket is not allowed to be played on the Parade Square. Basketball may be played on the Parade Square. Balls must be returned to Houses after use.

## **FITNESS SUITE - IN THE SPORTS HUB**

All Day and Residential Main School and Sixth Form students may use the Fitness Suite between 7am and 7.30am Monday to Friday. This provision is free of charge.

Students must see the Elite Performance Manager to arrange induction training, and parents will be required to sign a permission form.

It is also available to Residential Boarders between 7.30pm and 9.00pm on certain days throughout the week.

Students must not use the Fitness Suite alone. Two additional students must always be present

Students must wear branded shorts or leggings and a branded top when using the Fitness Suite between 7.30am and 7.30pm. (Students may wear any suitable clothing between 7am and 7.30am, and between 7.30pm and 9.00pm).

## SATURDAY SCHOOL

Sport and physical activities take place on a Saturday mornings and all Main School students must attend. Training will run in the mornings, though some fixtures may start earlier and finish earlier or later. Both Day Boarders and Residential Boarders may return home or to their Residential Houses once their Saturday morning commitment has finished. Residential Sixth Form students are expected to take part in Saturday School or attend supervised Private Study.

Students are expected to fulfill all school commitments before taking part in any external weekend activities or playing for any external clubs.





## **BODY PIERCING AND TATTOOING**

Students must not display any piercings (other than in the ears) or tattoos at any time during the school day. Students in Years 7-11 may wear one pair of discreet stud earrings, one in each lower ear lobe only. Students in the Sixth Form may wear multiple earrings provided they befit a professional working appearance. A member of the Wider Leadership Team will rule on what is deemed acceptable.

## **BOOTS (FOR SPORT)**

Students must not wear boots with studs or spikes (football, rugby, cricket etc) to and from the sports fields. Students must wear shoes, trainers, sliders or other suitable footwear (not socks only) and carry their sports boots on such occasions.

## **HAIR (ALL STUDENTS Y7-13)**

- Students must not colour their hair an unnatural hair-colour, nor cut their hair in any way considered extreme. Students must not cut or colour each others' hair.
- Boys' hair must not be too long (below the collar), excessively short or unnaturally coloured.
- Girls' hair should be neat, and not excessively short, shaved or unnaturally coloured.
- Y7-11 girls with long hair must have it all tied back behind their head with a plain, dark or neutral band.
- All facial hair must be neatly-trimmed at all times in a professionally presentable fashion.
- **Senior staff will rule on what is deemed acceptable.**

## **LABELLING**

All items of school uniform, including sports kit must be labelled with the student's name.

## **UNIFORM**

Gordon's School has an outstanding reputation for high standards and expectations. This also applies to school uniform. Students are expected to adhere to these standards and school uniform is to be worn during normal school hours and during prep. The following details should be noted:

### **ALL STUDENTS**

- The top button of the shirt must be fastened at all times.
- Shirts must be tucked in, not 'folded' or hanging out. Please ensure your child's shirt is long enough to tuck into the waistband of skirts/trousers.
- In hot weather, long shirt sleeves may be folded neatly at the elbow. Short sleeved shirts and blouses are permitted.

### **MAIN SCHOOL (Y7-11)**

- Main School students must wear school uniform at all times during the school day between 07:30 and 19:30hrs.
- Students may wear school branded PE kit in Prep.
- There will be occasions when Gordon's branded sports kit is acceptable, and students may wear this, when necessary, in the Dining Hall, as long as black tracksuit bottoms are also worn in the Autumn and Spring Terms.
- Students must wear school uniform in all lessons, detention and prep unless permission has been given to wear a tracksuit or sports kit (as above).
- Students may wear shorts or skorts in the Dining Hall in the Summer Term.
- Dark coats without a prominent logo may be worn in cold weather, along with a school scarf, or a dark, neutral scarf. Neither scarves nor coats may be worn inside buildings.
- Ties should reach just above the waistband.
- Girls competing in athletics may wear lycra shorts, but must put on PE skorts or tracksuit bottoms immediately after the event.
- Girls using the Fitness Suite or rowing ergos may wear lycra leggings. For all other activities, a skort must be worn over the leggings.
- Skirts must be of an acceptable length at all times. Students will be asked to replace any ill-fitting skirts. For guidance, skirts must be on or slightly above the knee.
- Nail varnish is not allowed and make-up must be discreet.
- Students may wear one earring in the lower lobe of each ear – no other piercings are allowed.

- A fine neck-chain and a watch may be worn. Additional jewellery is not allowed.
- Shoes should be robust, plain and formal, of matt black polishable leather (not patent). 'Ballet' style shoes are not allowed.
- Students who wear a skirt must wear white, unbranded, ankle socks (100 denier black tights from after Exeat in September until Easter).
- Students wearing trousers must wear black or grey socks (not trainer socks)
- Boys' trousers must be light grey and not tapered.
- Girls' trousers must be purchased from Valentino's in Knaphill.

## **SIXTH FORM STUDENTS ONLY**

- Formal dress (or branded sports kit for sport) is to be worn during the school day. All Sixth Form students are required to dress smartly as if they were working in a formal office environment.
- Students must wear a suit, a smart shirt and tie, and formal shoes or a two-piece suit with trousers or skirt. Students wearing a skirt must wear a smart top such that shoulders are covered at all times. Tops must not be low cut or cropped.
- Alternatively, students may wear a dress with a jacket. Skirts and dresses must be of an appropriate and decent length, as a guide between mid-thigh and knee length. A member of the Wider Leadership Team will rule on what is deemed acceptable.
- Dark coloured coats without a prominent logo may be worn in cold weather.
- Students may wear jewellery that is discreet and befitting a professional appearance. A member of the Wider Leadership Team will rule on what is deemed acceptable. Equally, make-up and nail varnish must befit a professional appearance.
- Students competing in athletics may wear lycra shorts, but must put on PE shorts/skorts or tracksuit bottoms immediately after the event.
- Students using the Fitness Suite or rowing ergos may wear lycra leggings.

## **BLAZERS-OFF**

A notice will be posted on the Staff Room door when students are permitted not to wear their blazers. This will typically happen when it is considered too hot to wear them. Blazers must otherwise be worn at all times with school uniform, except in classrooms when the teacher has given permission for them to be removed.

## **HOODIES**

Students may travel to and from school with their PE top under their blazer. This must be removed when they arrive in House, and not put on again until they go home.

In cold weather, a notice will be posted on the Staff Room door to permit students to wear their PE top under their blazer for marching.

House hoodies may only be worn for Inter-House events and for Saturday morning school with tracksuit bottoms or sports kit.

The hood of a hoodie may only be worn over the head in extreme weather conditions and with permission from staff.

## **UNIFORM FROM SEPTEMBER EXEAT TO EASTER:**



**UNIFORM FROM EASTER TO SEPTEMBER EXEAT:**



**SPORTS KIT:**





## **ANNUAL INSPECTION**

The Annual Inspection takes place in the summer each year and is the highlight of all the Parades held throughout the year. As with all the Parades, attendance by Main School students is compulsory.

## **BLUES**

Students are responsible for the maintenance, care and upkeep of their Blues Uniform, which is issued when joining the School. Blues must be kept in a suit-bag when not being worn. A Swap Shop operates at certain times of the year to exchange items of uniform for larger sizes as students grow through the School. The uniform must be returned to the School when students leave.

## **DRILL PRACTICE (MARCHING)**

This takes place for all Main School students on Friday afternoons between 4.00pm and 5.00pm. Students are expected to wear school uniform and permission will be given in colder weather to wear PE tops underneath blazers if necessary. Coats must not be worn.

## **PARADES**

There are typically six Parades at school per year including the Patron's Parade. Additionally, all Main School students attend the Annual Inspection in July.

## **MEMORIAL WEEKEND**

All Year 9 and 11 students are expected to march at the Whitehall Parade in January, along with members of the Pipes and Drums band.

All students in Years 7, 8 and 10 are expected to attend the Guildford Memorial Service in Blues. This is optional for Year 9 and Years 11 to 13 students.

Parents are invited to both events on the Memorial Weekend.





## **ABSENCE (DAY BOARDERS)**

**01276 858084 Option #1**  
**absence@gordons.school**

Parents must contact the School on either of the above by 9.15am to report that their child will be absent. Any absence notice not received will trigger an automatic request for information at 10.00am each morning. The reason for any absence must always be submitted in writing prior to the absence if known, or on the student's return to school.

## **LEAVING THE SCHOOL SITE DURING THE DAY**

Main School students must not leave the School site at any time during the school day. All Sixth Form and Main School Day Boarders must sign-out before leaving at the end of the day and may not come back on to site until the following school day, unless to attend a supervised, regulated activity, or special permission has been granted by House staff. Any students who are too unwell to be in school will be sent home by Medical Centre only. Contact will be made with parents in these instances.

Sixth Form students are expected to be in school and on site during P5 and P6 each day unless unwell, to attend medical appointments or a driving lesson. Students who have study periods during P5 and/or P6 must be working in the study rooms.

Sixth Form students may sign-out during the school day to visit local shops in

West End and must sign-in again on their return. Students must not use cars to visit these shops. Sixth Form students may also visit the Sports Hub Café when open. Sixth Form students are expected to attend all registration session (tutor time) and lessons on time.

## **OFF-GAMES/ P7/ PE**

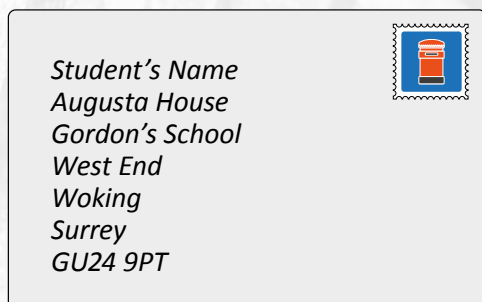
Day Boarders will need a signed note from home or a parental email if they are unable to take part in physical exercise.

Residential Boarders will need permission from the Medical Centre to excuse them from physical exercise.

Notes from home or the Medical Centre must be taken to the Co-curricular Coordinator prior to a Period 7 activity starting, or to a member of PE staff prior to a PE lesson starting.

## **POST**

Post sent to Residential Boarders must be clearly marked with the name of the student's House. For example;



## **COMPLAINTS**

Students wishing to make a complaint should speak first to their Head of House to have it resolved. If not satisfied, students may complete a yellow complaint form and submit it to the Deputy Head (Pastoral). These forms and advice on the complaints procedure can be found in all Houses.



## BROMCOM, SHAREPOINT & SOCS

These electronic platforms are used for;

- Accessing prep information and deadlines
- Accessing curriculum material and subject pages
- Accessing marks and grades for assessed work
- Accessing House pages and House information
- Accessing pastoral information and support
- Accessing the timetable and school calendar
- Accessing links to school social media, news and stories
- Accessing attendance and behaviour profiles
- Accessing Honours Programme and Co-curricular information

Students must ensure they have a charged tablet or laptop at all times to access this information.



## **MOBILE PHONES**

Day Boarders in Years 7-11 may not bring mobile phones, or any device which accesses the internet other than their school-issued tablet, to school unless an arrangement is in place to store them in the House Office.

Students in Years 12-13 may have their mobile phones in school. However, these must not be visible, audible or used during lessons unless the teacher has given permission to do so.

All Residential Boarders (Years 7-13) may bring mobile devices including phones into their Residential Houses. Students in Years 7-11 will have restricted access to their devices (as with Day Boarders) for use in the evening and at weekends only.

Mobile devices, other than school tablets with permission, must not be used in dormitories or washing areas at any time.

Residential Boarders in Years 7-11 must hand in all electronic communication devices overnight. Residential Boarders must not use electronic devices after lights-out.

Y7-11 Residential Boarders may have their phones at certain times during the weekends.

Residential Boarders in Year 7 are encouraged not to have access to their phone at any time until the first Exeat. Year 7 Residential Boarders may use the office phone to contact home if needed.

Any student can request to use the House Office phone at any time, or request access to their phone to call home if deemed necessary to do so.

Students must not lend or borrow electronic devices and students must not use another student's device. The school does not accept any liability for loss or damage to devices and parents are asked to cover all devices on home contents insurance.

Under no circumstances may audio or visual recordings be taken of anybody, staff or students, without their permission.

Students are responsible for their phone at all times.

Students in breach of this etiquette may lose the privilege of having a phone in school. Students serving a phone ban may ask to use the House phone to contact home.

## **MOBILE PHONE ETIQUETTE**

### **Y7-11 STUDENTS**

- Y7-11 students must not have phones in school at any time - they must be handed in to Houses at the start of the day.
- Residential students may have their phones at 7.30pm until roll call.
- Y7-11 students must keep phones in bags and out of sight during Saturday morning activities and fixtures, but may use them when travelling to and from their fixture or event.
- Y7-11 students must not take their phones on school visits or fixtures during the week, nor on some weekend or residential trips when specified.
- Students in breach of any of the above will have their phones confiscated by the Deputy Head (Pastoral) and will only be returned to parents at a mutually convenient time.

### **Y12-13 STUDENTS**

- No mobile phones visible or to be used in the Dining Hall, Chapel, Rec, 'Mobile-free Zones' in Houses or when walking between lessons.
- Students may only use phones in lessons, P7 or Saturday activities with the teacher's permission
- Mobiles must be on silent at all times, during lessons and school activities.

## **LOST PROPERTY**

- Items of lost property may be reclaimed from the School Reception.
- Items of sports kit should be reclaimed from the PE Office.

## **MONEY**

Day Boarders should not bring large amounts of money into school. There may be occasions when small amounts will be necessary for charity events.

Residential Boarders must keep their pocket-money in the House and ask Houseparents for it as agreed with parents. Any small amounts stored in dorms must be locked away out of sight. Students are encouraged to use electronic banking where possible.

Students must not lend or borrow money.

## **PASSPORTS**

Passports of all international boarders must be kept securely in the House Office.





## RESIDENTIAL BOARDING

### ROLL CALL

Main School	7.30am
All Years	9.00pm (30 minutes later on Saturdays)
All Years	9.15pm (Summer Term)

### CURFEW

Main School	Autumn and Spring Terms	9.00pm
	Summer Term	9.15pm
Sixth Form		10.15pm

(30 minutes later on Saturdays)

### BED TIMES FOR RESIDENTIAL BOARDERS

Year 7	Rooms 8.30pm	Reading Time 8.45pm	Lights Out 9.00pm
Year 8	Rooms 9.15pm	Reading Time 9.30pm	Lights Out 9.45pm
Year 9	Rooms 9.30pm	Reading Time 9.45pm	Lights Out 10.00pm
Year 10	Rooms 9.30pm	Reading Time 9.45pm	Lights Out 10.00pm
Year 11	Rooms 10.00pm	Reading Time 10.15pm	Lights Out 10.30pm
Years 12 & 13	Rooms 10.30pm		Lights Out 11.00pm

(30 minutes later on Saturdays)

## **LAUNDRY**

Residential Boarders may deposit their clothes for laundering. See individual Houses for details. Clothes deposited for laundering must be clearly labelled or in a laundry-bag, and must be machine-washable on a regular cycle and must be able to be tumble-dried. The School will not accept responsibility for lost or damaged items except in extraordinary circumstances. Sixth Form students may do their own laundry in House.

## **LEAVE-OUT**

### **(EXEAT WEEKENDS AND END OF TERMS/HALF-TERMS)**

For Full Residential Boarders, parents must notify Houseparents of the pick-up and return arrangements, and supervision arrangements for the period away from school during Exeat weekends and holidays.

## **LEAVE-OUT**

### **(RESIDENTIAL BOARDERS AT WEEKENDS)**

Parents will be asked to return a permission form at the start of the year indicating permission for some leave-out arrangements. All Full Residential Boarders wishing to go out overnight at the weekend must make arrangements with their Houseparents.

For any events not covered in the permissions form, parents must email, write or telephone Houseparents to grant permission, before a Boarder is released from the School's Duty of Care. A Houseparent may still veto this permission if they feel that a child may be placed in danger, and the matter will be reported to the Deputy Head (Pastoral) for attention.

A Leave Form must be signed off by House staff 48 hours in advance in order for a Residential Boarder to stay away overnight on any night when they would normally be staying in school. This form requires staff to check permissions from both parent and host. Houseparents may grant the permission in loco parentis in extreme cases after checking with the host.

## **LEAVE-OUT**

### **(Visits to Friends' Houses by Residential Boarders)**

Residential Boarders may visit the homes of friends living locally with the permission of their Houseparents.





## **LEAVE-OUT (WEEKEND DAY-LEAVE BY RESIDENTIAL BOARDERS)**

- Y10 and 11 Day and Residential Boarders may visit local shops in West End on a Friday evening after marching until 6.00pm.
- Y7 Residential Boarders may visit local shops in West End at weekends in groups of three.
- Y8 Residential Boarders may additionally visit Lightwater.
- Y9 Residential Boarders may additionally visit Camberley.
- Y10 Residential Boarders may additionally visit Woking.
- Y11-13 Residential Boarders may visit any of the above, and also Guildford.

Students must behave as they are expected to in school, and all school rules are applicable. Students must not act or behave in any way that might be deemed a nuisance or anti-social and must not act in such a way as to bring the School into disrepute.

## DAILY ROUTINE

07.00	Wake-up
07.30	Breakfast Available to Residential Boarders
07.45	Day Houses Open
08.15	Registration in Form
08.20	Chapel / Assembly / House Meeting / Tutor Meeting
08.20	Registration by Form Tutor
08.40	Period 1
09.35	Period 2
10.30	Break
11.00	Period 3
11.55	Period 4a / Lunch for Y7-10
12.50	Period 4b / Lunch for Y11-13
13.45	Period 5
14.40	Period 6
15.35	Break
16.00	Period 7
17.00	Tea

## BREAK TIME

Students may return to their Houses at Break in the morning and after Period 6. Snacks are available for Day and Residential Boarders at 15.35 in Houses.

## FOOD

### WEEKDAYS:

07.30—08.00 Breakfast for Residential Boarders  
11.55—12.50 Lunch for Y7-Y10  
12.50—13.45 Lunch for Y11-Y13  
17.00—17.50 Tea for all students  
19.45 Snack for Residential Boarders

### WEEKENDS:

09.00—09.30 Breakfast  
12.30—13.00 Lunch  
17.30—18.00 Tea

Students must assemble in year groups shortly before their published lunch time, and by House before the published tea time. Students must queue in an orderly fashion outside before being escorted in by staff.

- Tuck Shops operate in all Houses. See individual Houses for details.
- Kitchen facilities are available in all Houses. See individual Houses for details.
- Students must not take hot food to their dorms or rooms.
- Students must not eat whilst walking around the school.

## **LEAVING THE SCHOOL SITE DURING THE DAY**

Main School students must not leave the School site at any time during the school day. All Sixth Form and Main School Day Boarders must sign-out before leaving at the end of the day and may not come back on to site until the following school day, unless to attend a supervised, regulated activity, unless special permission has been granted by House staff.

Sixth Form students may sign-out during the school day to visit local shops in West End and must sign-in again on their return. Students must not use cars to visit these shops.

## **ON-SITE AFTER PREP AND AT WEEKENDS**

No Day Boarders are allowed on site after prep during the week unless attending a staff-supervised activity, or with the permission of a Residential Houseparent.

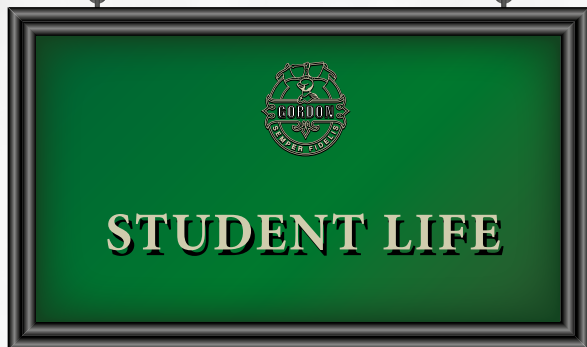
Similarly, no Day Boarders are allowed on site after P7 at the weekend unless attending a staff-supervised activity, or with the permission of a Residential Houseparent.

## **OUT OF BOUNDS AREAS**

Areas designated as out-of-bounds to students are clearly marked on House notice boards. These areas are out-of-bounds at all times unless supervised by a member of staff. Students found in out-of-bound areas or in unstaffed buildings together may be at risk of sanctions or a suitability for boarding assessment.

## **PUBLIC HOUSES**

No Day or Residential Boarders in the Main School or the Sixth Form may visit any licensed property and consume alcohol whilst under the Duty of Care of the School, unless extraordinary permission has been sought from the Deputy Head (Pastoral).



## **INTERNET**

Wi fi is available to all students using their school log-in details. Students must sign and adhere to the Acceptable Use Policy and must also follow the School's e-safety guidance. Students must not install or use VPNs on their tablets nor download them onto school equipment.

## **PREP**

All students must be in uniform or Sixth Form formal attire for prep. Students may also wear Gordon's branded PE kit in prep.

Main School students will have 75 minutes of prep Monday through to Thursday. All students are encouraged to stay in school for prep.

## **PREP ON FRIDAY 6.00 - 7.00PM**

This is silent time. Day Students may go to the library to complete prep. Residential students may stay in Houses to read, organise their spaces or complete prep in an allocated prep room. Electronic devices may only be used for prep purposes. Residential students staying in House may change into mufti.

## REWARDS:

Behaviour		Reward
Most commendations / Top 25% effort grade	5	Certificate / Letter home (Head)
Top 10 commendations per year Y7-11	4	Letter home (DHC)
Consistently good contribution and effort	3	Postcard / email home (Dept.)
Very good effort or work	2	Commendation
Good effort or work Good effort	1	Verbal Praise Good Comment
Level		

## SANCTIONS:

Behaviour		Sanction
High-level offence	5	External Exclusion
Cont. poor behaviour OR single major misdemeanour	4	Immediate referral to the School Office and Internal Exclusion
Further poor behaviour OR unacceptable behaviour	3	Detention
Repeated poor behaviour	2	Bad comment & <u>option</u> to take 5 minutes
Low-level poor behaviour e.g. talking over others	1	Verbal warning
Level		

## **SCHOOL DETENTION FRIDAY 5.00-5.45PM (SIXTH-FORM 4.00-4.45PM)**

If a student reaches Level 3 on the Classroom Behaviour Management Protocol (see previous page), the teacher must put them in detention (this may be in the following lunchtime or after school on Friday). This will be after school on Thursday, if Friday is the start of an Exeat or holiday).

- The student must be clearly told they are in detention and that they must therefore go to tea afterwards.
- The detention must be entered into Brom Com.

A member of staff may also issue a detention, without warnings, where they feel a student's behaviour is sufficiently inappropriate (mid-high level).

### **DETENTION DAILY AT LUNCH TIMES**

If a student fails to hand in a piece of prep at the required time they will be placed in a lunch time detention. The student is told the day they are to attend either face to face or by email/Brom Com. Lunch time detentions for Y7-10 are at 12.00pm-12.30pm, and lunchtime detentions for Y11-13 are at 1.00pm – 1.30pm. Lunch time detentions are also used for unacceptable behaviour in the classroom.

### **SUBSTANCE ABUSE**

The following applies at all times during the School day, on the way to or from school, or on any school trip or activity during term time or during the holidays.

Students must not possess or use tobacco or any smoking related materials or paraphernalia, including e-vaping materials.

Students must not possess or consume alcohol or any products containing alcohol.

Students are not allowed to return to their Boarding House in the evening after they have attended an event off-site where alcohol has been served.

Students must not possess or use any substance intended for human consumption that is intended to produce a psychoactive effect.

Should we suspect a student to be under the influence of drugs or alcohol, we may decide to test them onsite to ensure their safety and the safety of others. Students who choose to abuse illegal substances onsite are at risk of permanent exclusion.

The School has a partnership with Surrey Police to support their training of sniffer dogs. As such, we may have sniffer dogs onsite and in school buildings without prior notice being given.

## **BICYCLES AND E-SCOOTERS**

Day Boarders may cycle to school, but must dismount and walk with the bicycle once on site. Storage facilities are available.

Residential Boarders may keep bicycles in school and these may be used with permission from the Houseparents.

Helmets must be worn at all times when riding a bicycle, and bicycles must be road-worthy.

E-Scooters are not permitted on the school site.

## **DRIVING**

Year 13 students only may apply for a Parking Permit from Mr Sutton, to drive to school and park in the school's car park on the north side of the site. Parking permits on site are limited. The School reserves the right to remove parking permissions if the student is considered unsafe, demonstrates any degree of dangerous or unlawful driving, or uses their car for any other reason than travelling to and from school at the start and end of the day, unless permission has been sought from the Head of House.

Students must not bring their cars onto the Main School site except in exceptional circumstances and with permission from a member of staff.

If travelling in the car of a member of staff, students should always sit in the back seat, and whenever possible a third person should be present.

Students travelling in cars, minibuses or coaches must wear seatbelts at all times.

## **PICK-UP TIMES**

Day Boarders in Sandringham, Khartoum, Gravesend and Buckingham, and girls with siblings in those Houses, must be collected at either 7.00pm or 7.30pm from the Library end of the Parade Square. Day Boarders in China, Kensington, Augusta, Victoria, Windsor and Balmoral (unless with siblings) must be collected from the Dining Hall end.

Students leaving before 6.00pm must be collected from the car park on the north side of the site.

At the beginning and end of terms, pick-up on the Parade Square is staggered for Day Boarders to be collected first, and then afterwards for Residential Boarders.



## **ALARM – FIRE EVACUATION**

On hearing the School fire alarm (uninterrupted sirens) between 8.20am and 7.30pm, students must assemble in silence on the Front Field at their House assembly point.

At all other times after 7.30pm and at weekends, Residential Boarders must assemble at their House assembly point on the Parade Square. Day Boarders on site at this time must assemble in front of the School Office on the Parade Square

## **ALARM – LOCK-DOWN**

On hearing the lock-down alarm (5 intermittent blasts) students must make their way immediately into the nearest building and lock doors and windows once everybody wanting to gain entry has done so.

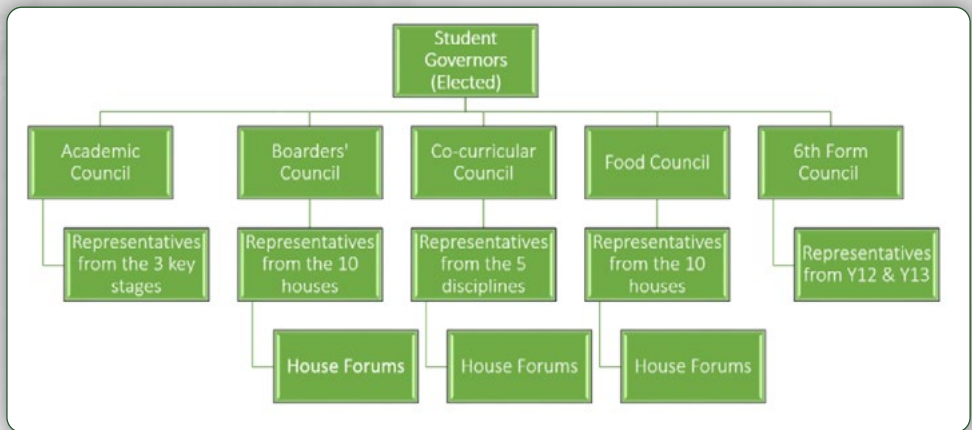
Students must remain locked in the building until they hear the fire evacuation alarm. Students will then assemble as per the fire evacuation above for a roll call.

## **BRIDGE**

Students must use the bridge at all times when crossing to and from the Back Field, the Band Room and other facilities on the north side of the school site.



# STUDENT VOICE





## **REPORTIT@**

Any concerns a student has can be raised via the ReportIT@ email address. This includes safeguarding, bullying, racist, homophobic, or terror-related concerns.

## **BULLYING**

At Gordon's we believe that the starting point for combating bullying is to create a culture where bullying is unacceptable. Every student has a right not to be bullied. Every student has the right to be safe and happy at school, and to be protected when they are feeling vulnerable. Bullying extends beyond conflict. It is an abuse of power not a falling out.

Students are encouraged to talk to a member of staff in the House at the earliest opportunity if they have any concerns about bullying. Each House has three appointed Anti-Bullying Ambassadors whom students can turn to for advice if they are being bullied, or if they are aware of any bullying.

Each House also has a box where students can post anonymous notes about any concerns they may have about bullying, or indeed anything at all. Students can also email the Head Boy or Head Girl.

We are proud to be a United Against Bullying Gold Award accredited School.

## **CHAPEL**

The Chapel is at the spiritual centre of the School, promoting Christian values, and recognising the values and teachings of all religions. Students attend Chapel once a week and on Parade Sundays when they have the opportunity to observe a Christian Service or reflect upon their own individual beliefs.

Chapel is an important opportunity for the community to come together to celebrate its values.

## **PRAYER/QUIET ROOM**

This facility, in the vestry of the Chapel, is available to all students. Students should speak to a member of House staff for access in the evenings and at weekends.

## **CHILD PROTECTION AND SAFEGUARDING**

Students are encouraged to report any form of abuse they are aware of, or that they themselves are suffering from, to a member of staff at the earliest opportunity. Additionally, students can talk to the Deputy Head, the Designated Safeguarding Lead Mrs Gill, or any of the Deputy-DSLs, Mr Cherry, Ms Carruthers, Mrs Forster.

## **DOCTORS/DENTISTS**

### **01276 858084**

Day Boarders must sign out and in to school at the School Office when attending appointments. Parents must call the above number to alert the School in advance if their child will be absent to attend an appointment.

Residential Boarders can be taken to appointments by school staff and a charge will be applied to cover the costs of this.

## **MEDICAL ISSUES**

### **DAY STUDENTS**

If students feel unwell, they should report to the School Office. Students may have a short period of rest in the School Office before returning to lessons, or they will be sent to the School Medical Centre for assessment. Simple over-the-counter medications may be given (provided parental consent is in place) or parents will be called to collect the child if absolutely necessary. Parents should not collect their child without speaking to a member of school staff first.

### **RESIDENTIAL STUDENTS**

As above during lesson time, except that students who are unfit to return to lessons will be looked after in the School Medical Centre. Outside of lesson time, Residential Boarders have access to the School Medical Centre or on-call nurse for all their medical needs.

### **ALL STUDENTS WITH INDIVIDUAL HEALTH CARE PLANS (IHCP)**

In addition to the above, Students with medical conditions may have an Individual Health Care Plan which sets out specific care arrangements for that child. These IHCP's are agreed in advance with the student, parents/carers and often their specialist health care team.

### **MEDICINES**

Day Boarders must hand in all prescribed medicines, in their original boxes and named, to the Medical Centre. They will be administered from the Medical Centre, unless House staff are instructed to administer the medicine from the House.

Residential Boarders must hand in all prescribed medicines to the House Office on their arrival at school at the beginning of the week or term. These will be administered from the House Office and audited by the Medical Centre.

The only exception to this are asthma inhalers and epipens which students must carry with them at all times as directed.

Students must not keep either prescribed or over-the-counter medication in their rooms unless by arrangement with the Medical Centre and House.

## MEDICAL CENTRE OPENING TIMES

The Medical Centre is for use by Residential Boarders and Day Boarders with a Medical Care Plan only.

Medical Centre staff may be called to attend to any emergency medical situation.

Students must not arrive at the Medical Centre after 8.30am without a referral from a member of staff in the House or the School Office.

Residential Boarders only 8.00am — 8.30am

Residential Boarders and Day Boarders with a Medical Care Plan by **pre-arranged appointment only:**

10.30am to 10.50am

12.40pm to 1.30pm

3.35pm to 3.55pm

5.00pm to 6.00pm

Saturday 9.30am to 12.15pm



Gordon's School  
West End  
Surrey  
GU24 9PT

01276 858084  
[info@gordons.school](mailto:info@gordons.school)

