



Gordon's School Sociology Department

A-Level - Curriculum Map

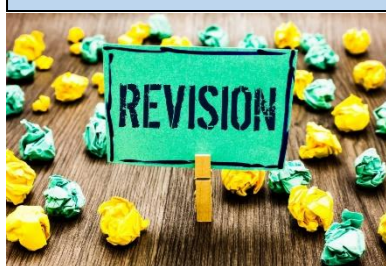


Key Words / Skills:

A01: Demonstrate knowledge and understanding of sociological theories, concepts, evidence, research and methods.

A02: Apply Sociological theories concepts, evidence and research to a range of societal issues.

A03: Analyse and evaluate sociological theories, concepts, evidence and research methods



Year 13

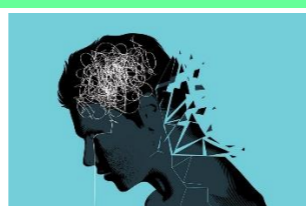
Teacher 1: Revision and Exams

Teacher 2: Revision and Exams

Teacher 2: Revision and Exams

Teacher 1: Revision and Exams

Teacher 2: Paper 2: Beliefs in Society
Global Context, Organisations, Ideology and science



Teacher 1: Paper 3: Crime and Deviance

Functionalism and Crime, Mental illness and suicide, Marxism and crimes of the powerful, Realism

Teacher 2: Paper 3: Theory and Methods

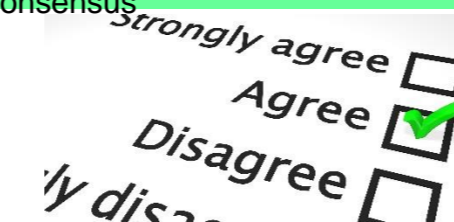
Theories, Ethnomethodology Phenomenology, Integrated approaches, POMO and LM, Conflict and Consensus

Teacher 1: Paper 3: Crime and Deviance

Gender, Ethnicity, Moral Panics, Globalisation, State Crime, Crime Prevention/Punishment

Teacher 2: Paper 2: Beliefs in Society

Theories of Religion, Social Change, Secularization, Religion and choice



Teacher 2: Paper 1 and 3: Theories

Objectivity, soc as a science, policy

Teacher 2: Paper 1: Education Methods in Context

Choosing a RM, Process of Research, Experiments. Questionnaires, Interviews, Observations, secondary sources

Teacher 1: Paper 2: Families and Households

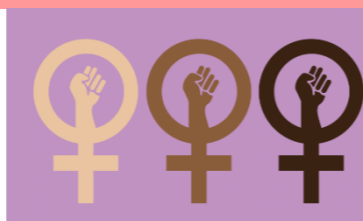
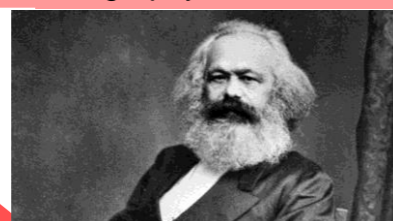
Childhood, Demography

Teacher 1: Paper 2: Families and Households

Family Diversity, Couples, Policy

Teacher 2: Paper 1: Education

Theories of education, Educational Policy



Year 12

Teacher 1: Paper 2: Families and Households

Theories of the Family, Changing Family Perspective

Teacher 2 Paper 1: Education

Class, Gender, Ethnicity

