



# Gordon's School Sociology Department

## A-Level - Curriculum Map

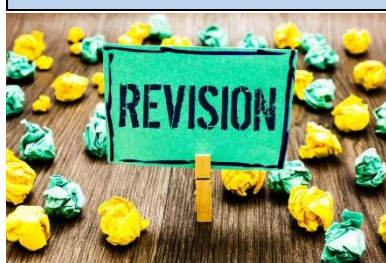


### Key Words / Skills:

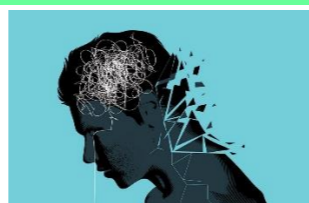
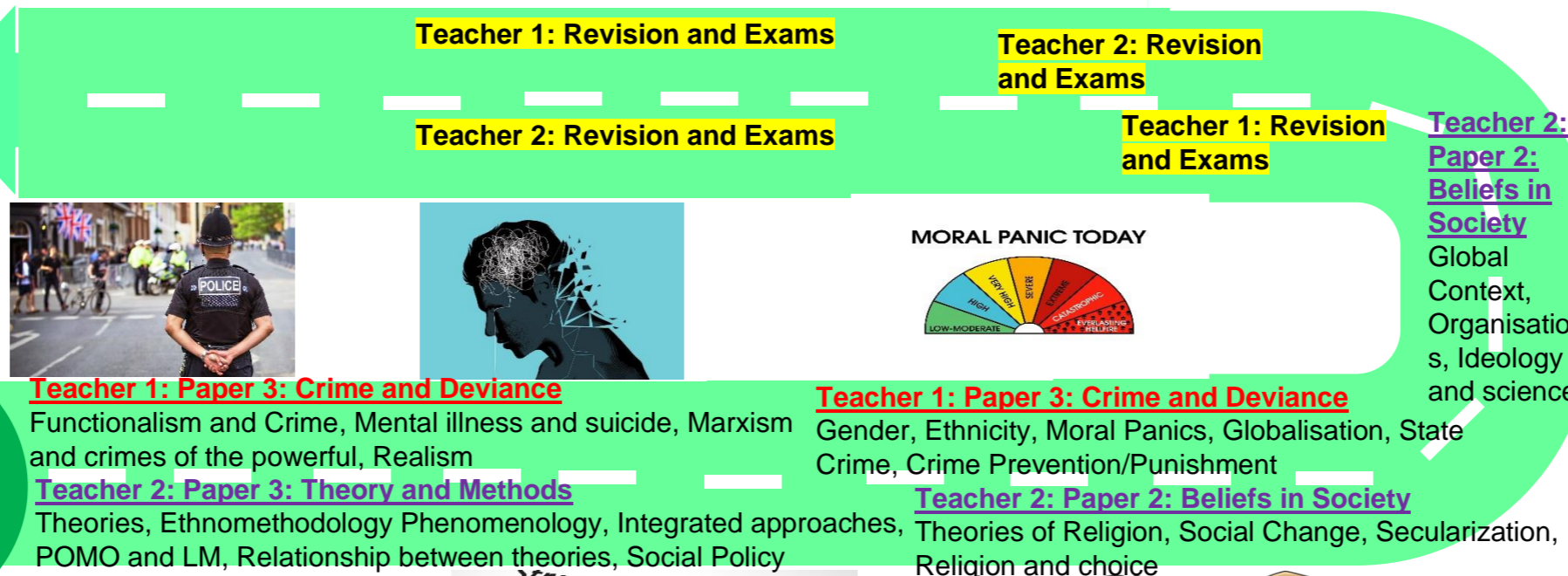
A01: Demonstrate knowledge and understanding of sociological theories, concepts, evidence, research and methods.

A02: Apply Sociological theories concepts, evidence and research to a range of societal issues.

A03: Analyse and evaluate sociological theories, concepts, evidence and research methods



**Year 13**



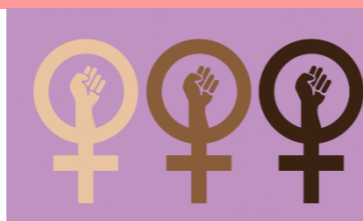
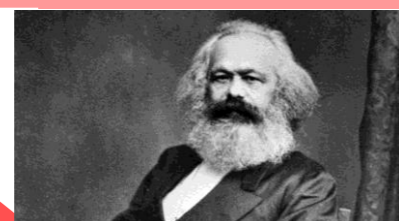
**Teacher 1: Paper 1 and 3: Theories**  
Marxism, Feminism, functionalism, NR, SAT PM

**Teacher 2: Paper 1: Education Methods in Context**  
Choosing a RM, Process of Research, Experiments. Questionnaires, Interviews, Observations, secondary sources

**Teacher 1: Paper 2: Families and Households**  
Childhood, Demography

**Teacher 1: Paper 2: Families and Households**  
Family Diversity, Couples, Policy

**Teacher 2: Paper 1: Education**  
Theories of education, Educational Policy



**Year 12**

**Teacher 1: Basic Theories**  
Marxism. Feminism. Functionalism. New Right. Social Action Theory. Post-Modernism

**Teacher 2 Paper 1: Education**  
Class, Gender, Ethnicity

**Teacher 1: Paper 2: Families and Households**  
Theories of the Family, Changing Family Perspective

