



Gordon's School Sociology Department

A-Level - Curriculum Map

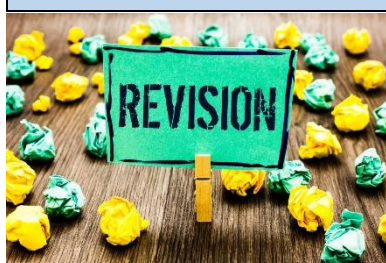


Key Words / Skills:

A01: Demonstrate knowledge and understanding of sociological theories, concepts, evidence, research and methods.

A02: Apply Sociological theories concepts, evidence and research to a range of societal issues.

A03: Analyse and evaluate sociological theories, concepts, evidence and research methods



Teacher 2: Revision and Exams

Year 13

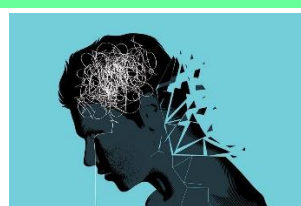


Teacher 1: Paper 3: Crime and Deviance

Functionalism and Crime, Mental illness and suicide, Marxism and crimes of the powerful, Realism

Teacher 2: Paper 2: Beliefs in Society

Theories of Religion, Social Change, Secularization, Religion and choice



Teacher 1: Paper 3: Crime and Deviance

Gender, Ethnicity, Moral Panics, Globalisation, State Crime, Crime Prevention/Punishment

Teacher 2: Paper 2: Beliefs in Society

Global Context, Organisations, Ideology and science



Teacher 2: Revision and Exams

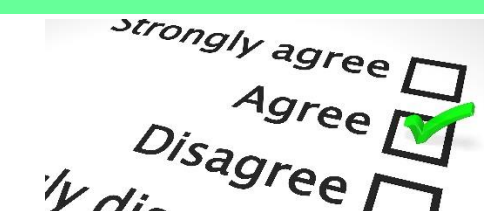
Teacher 1: Revision and Exams

Teacher 1: Paper 3: Theory and Methods

Theories, Ethnomethodology Phenomenology, Integrated approaches, POMO and LM, Relationship between theories, Social Policy

Teacher 2: Paper 2: Families and Households

Childhood, Demography



Teacher 1: Paper 1: Education Methods in Context

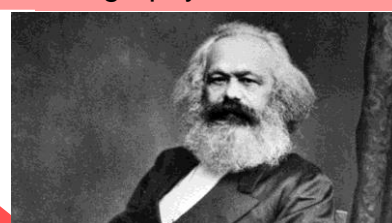
Choosing a RM, Process of Research, Experiments. Questionnaires, Interviews, Observations, secondary sources

Teacher 2: Paper 2: Families and Households

Family Diversity, Couples, Policy



Teacher 1: Paper 1: Education
Theories of education, Educational Policy

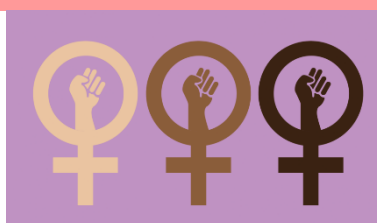


Teacher 1: Basic Theories

Marxism, Feminism, Functionalism, New Right, Social Action Theory, Post-Modernism

Teacher 2: Paper 2: Families and Households

Theories of the Family, Changing Family Perspective



Teacher 1 Paper 1: Education

Class, Gender, Ethnicity



Exam Specification:



Should this QR code not work, please click [here](#) for the relevant specification.

