



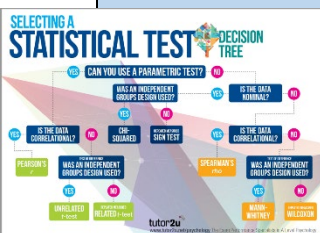
Gordon's School Psychology Department

A-Level - Curriculum Map



Key Words / Skills:

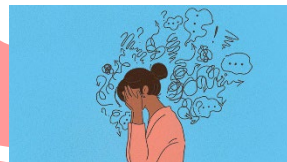
- AO1 - Demonstrate knowledge of terms, concepts & theories.
- AO2 - Apply knowledge and understanding to various scenarios.
- AO3 – Analyse and Evaluate concepts and studies learned.



Year 13

Teacher 2: Paper 2: Research Methods 2

Correlations, Case Studies, reliability validity Statistical Tests, Psychological investigations, features of science



Teacher 1 & 2: Paper 1: Memory

Coding, Capacity, Duration, MSM, WMM, Explanations, Factors affecting, Eye witness Testimony

Teacher 1: PAPER 2: Approaches



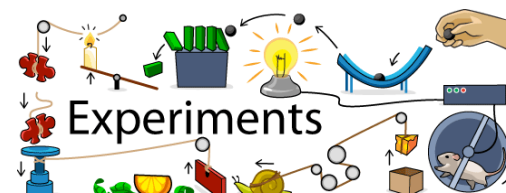
Year 12



Behaviourist, Social Learning Theory, Cognitive, Biological, Psychodynamic, Humanistic, Comparison

Teacher 2: Paper2: Research Methods 1

Experiments, Variables, Sampling, Ethics, Pilot Studies, Observations, Self-report, Correlations, Data analysis, Introduction to statistical testing.



Teacher 1: Paper 1: Social Influence

Conformity, Obedience, Resistance to SI, Minority influence, Social influence and change

Teacher 2: Paper 1: Clinical Psychology in the field of

Abnormality, Phobias, Depression, OCD, Behavioural, Cognitive, Biological



Teacher 1: Paper 1: Attachments

Stages of Attachment, Animal Studies, Explanations of Attachment, Ainsworth Strange

Situation, Cultural Variations, Maternal Deprivation, Later relationships

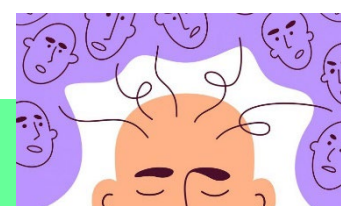


Teacher 1, Paper 3: Issues and Debates

Gender Bias, Culture bias. Freewill determinism Nature vs Nurture Idiographic nomothetic, Social Sensitivity

Teacher 2, Paper 2: Biopsychology

Nervous System, Localisation, Plasticity, Split-brain, Investigating the brain

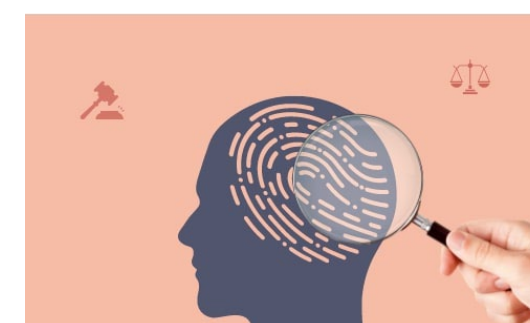


Teacher 1, Paper 3: Relationships

Factors affecting attraction, Theories of romantic relationships, Online relationships, Parasocial

Teacher 2, Paper 3: Forensics

Defining Crime, Offender Profiling, Biological explanations. Psychological explanations, dealing with offending behaviour



Teacher 1: Revision and Exams

Teacher 1, Paper 3: Schizophrenia

Biological Explanations, Psychological explanations, Therapies, Interactionist approach

Teacher 2: Revision and Exams