



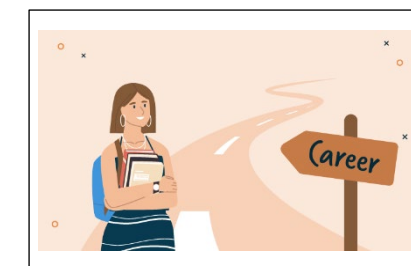
Gordon's School PSHE + Citizenship

Key Stage 5 - Curriculum Map



Key Words / Skills:

Positive relationships
Managing your mental health
First Aid
Personal responsibility and choices
Drug misuse
Addiction
Sexual Health
Relationship challenges
Career and employment
British Values



Exams



Relationships and Sex Education | Citizenship

Fertility and impacts on it, Pregnancy and miscarriage, series of topical Citizenship debates focusing on key themes

Financial decision making | Next steps & employability

Personal finance, preventing ID fraud and theft, PAYE/ Taxes/ Payslips, employability & interview skills



Respect and British Values

FGM, Forced marriage and Honour killings
Understanding extremism, Divisive language, Radicalisation, Preventing extremism

Year 13

Relationships and Sex Education | Intimate relationship challenges

Identifying unhealthy relationships, coercive control, managing unwanted attention, online abuse and blackmail, revenge pornography

Respect and British Values | Health & wellbeing, staying safe

Prevent strategy, Radicalisation, Developing healthy lifestyles, managing stress through exams, revisiting misuse of drugs, festivals behaviour



Staying safe | Health and Wellbeing

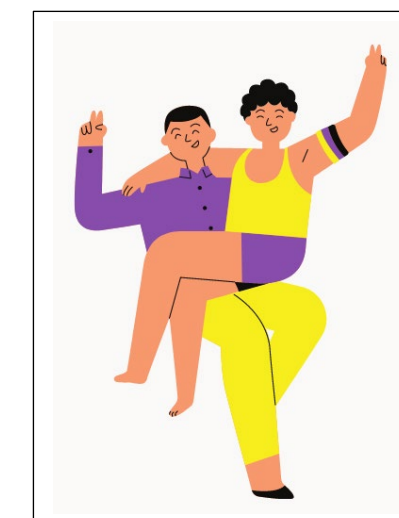
Revisiting Drug and alcohol misuse, FGM, Forced marriage and Honour killings, Revisiting consent, First Aid

British values and citizenship |

Ethics and Fair Trade, Ethical consumerism, LGBT Rights, Neurodiversity Fake news and critical thinking,

Financial decision making | Next steps & employability

Personal finance, employability, interview skills, enterprise, online reputation in the workplace



Year 12

Mental Health & wellbeing | Respect and British Values

Mental health, Dealing with anxieties, developing resilience, Suicide awareness, Gender bias, Toxic and positive masculinity

Relationships and Sex Education | Intimate relationship challenges

Positive intimate relationships, Crossing the line with sexting, Consent, Revisiting contraception,

