



Gordon's School Media Studies Department

A-Level - Curriculum Map



Key Words:

RAIL: Representation / Audience / Industries / Language

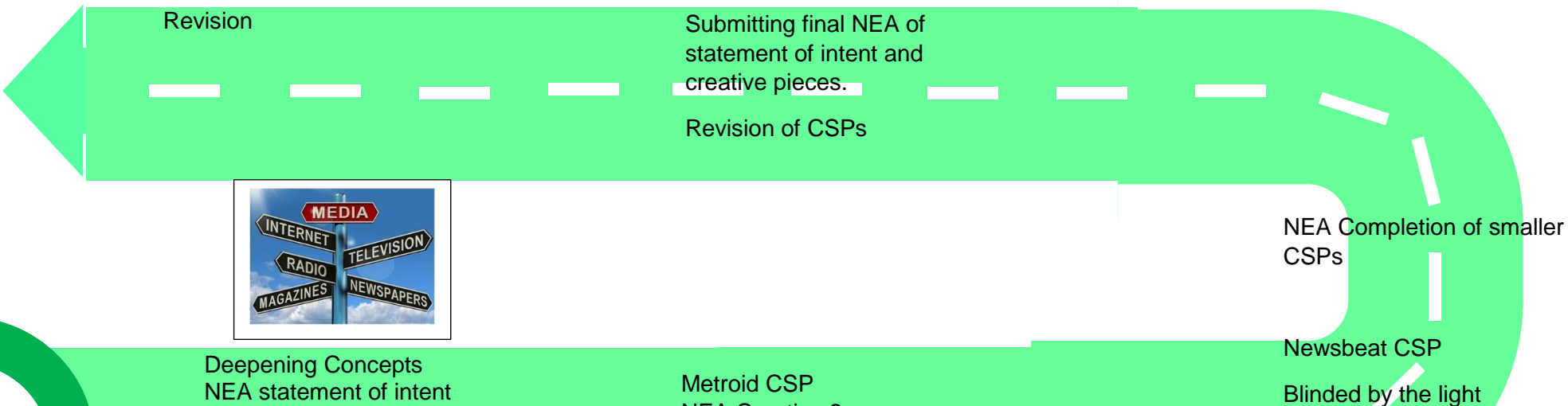
PEAL: Point / Evidence / Analysis / Link

Mise-en-scene

Perspectives: Feminism / Marxism / Postmodernism / Post-colonialism

Key Theories:

Bulmer's gender performativity theory
Bulmer and Katz- uses and gratifications
Cohen's moral panic theory
Gauntlett's identity theory
Hall's reception and representation theory
Jenkins' participatory culture theory
Mulvey's Male Gaze theory
Neale's genre theory
Strauss- binary oppositions
Todorov's narrative theory
Van Zoonen's gender and representation theory

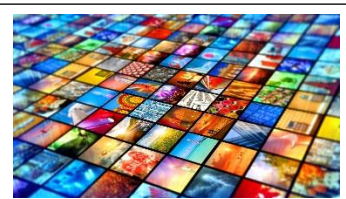


Year 13



Deepening Concepts
NEA statement of intent
NEA Creative piece 1
Oh Comely CSP
Teen Vogue CSP

Metroid CSP
NEA Creative 2
Paper 1 CSPs



NEA creative research

Choose NEA Brief

Introduction to NEA research
The Voice CSP
Teen Vogue CSP

Ghost Town CSP
Letter to the free CSP

War of the Worlds
The Sims CSP
Theories and perspectives



Witness CSP
Maybelline CSP
Men's Health CSP

Year 12

Introduction to key theories and concepts

Intro to RAIL Key concepts

Exam Specification:



Should this QR code not work,
please click [here](#) for the relevant
specification.

