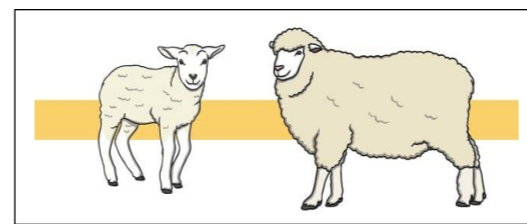
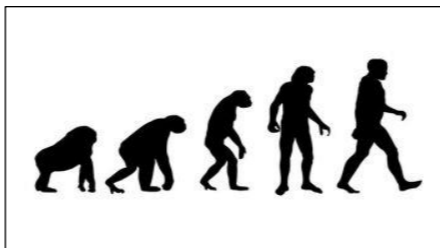




Gordon's School Biology Department



GCSE - Curriculum Map

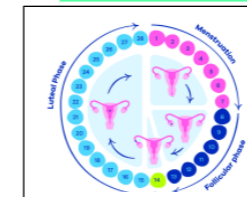
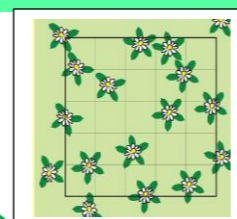
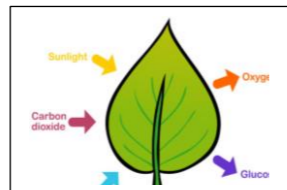


Key Skills:

- Development of scientific thinking
- Planning investigations
- Developing experimental skills and strategies
- Recording data – tables and graphs
- Data analysis
- Data evaluation

Key Terms:

- Accuracy
- Control variable
- Dependent variable
- Error
- Independent variable
- Precision
- Prediction
- Repeatable
- Reproducible
- Variable



Homeostasis in Action (set 1 only)

Hormonal Control

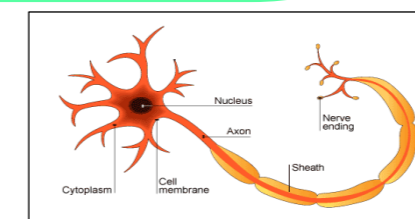
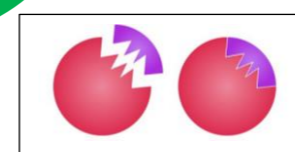
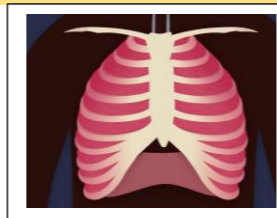
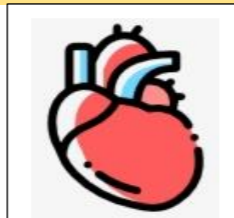
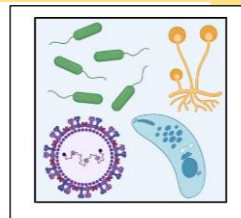
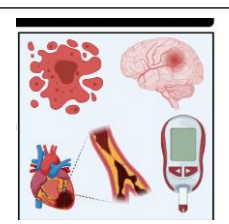
Year 11

Finish Ecology

Human Nervous System

Non-communicable diseases

Photosynthesis — Respiration — Ecology



Preventing & treating disease

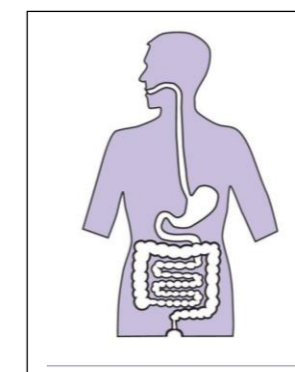
Communicable diseases

Organising Animals & Plants

Finish Organisation & the Digestive System

Year 10

GCSE Organisation & the Digestive System



GCSE Cell Structure & Transport

GCSE Cell Division & Stem Cells

Year 9

Exam Specification:



Set 1

Should this QR code not work, please click [here](#) for the relevant specification.

Exam Specification:



Sets 2-6

Should this QR code not work, please click [here](#) for the relevant specification.

Command Words:

- Calculate
- Compare
- Complete
- Describe
- Determine
- Evaluate
- Explain
- Justify
- Predict
- State
- Suggest
- Use