



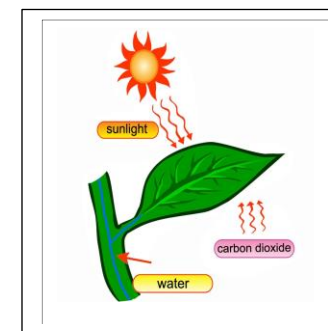
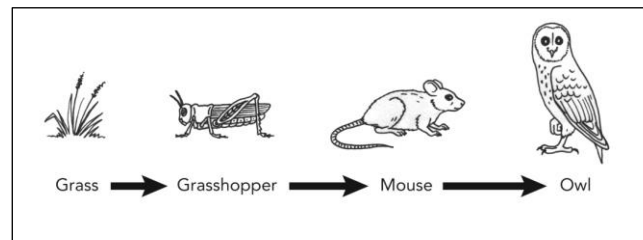
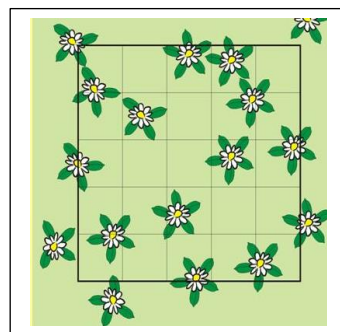
# Gordon's School Biology Department



## KS3 - Curriculum Map

### Key Skills:

- Planning investigations
- Identifying variables
- Developing experimental skills
- Recording data – tables and graphs
- Data analysis
- Data evaluation



### Key Terms:

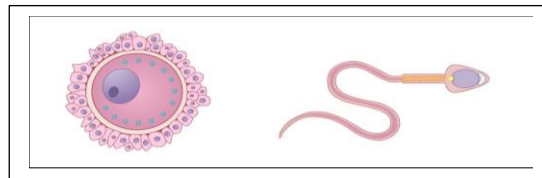
- Accuracy
- Control variable
- Dependent variable
- Error
- Independent variable
- Precision
- Prediction
- Repeatable
- Reproducible
- Variable

### Ecosystem and Adaptations

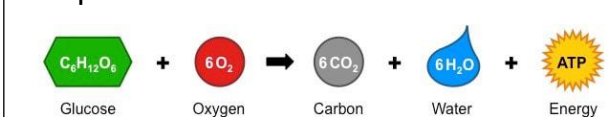
Energy transfer through food chains and webs. How organisms are adapted to survive in their habitats. How we sample populations.

### Biological Processes

Leaf adaptations and photosynthesis. How respiration transfers energy we need to carry out vital process.



### Respiration:



### Health & Lifestyle 2

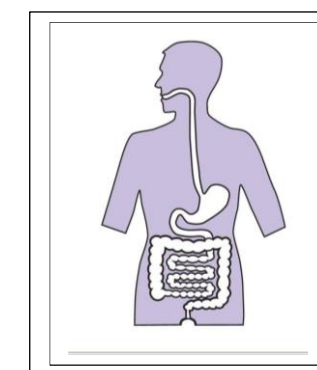
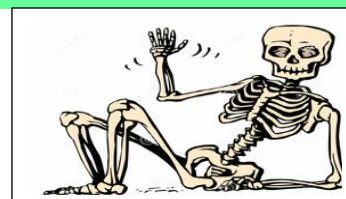
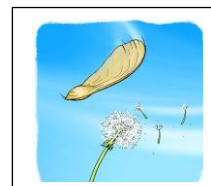
The effects of smoking, drugs, and alcohol.

### Human Reproduction

Changes the human body goes through during puberty, as well as the menstrual cycle, pregnancy, and contraception.

### Health & Lifestyle 1

What we eat and how we digest our food. How we identify food through food test. What is a healthy diet?



### Plant Reproduction

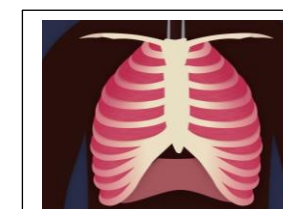
How plants reproduce. The structure of flowers. Seed dispersal, pollination, and germination.

### Body systems 2

How muscles and the skeleton work together to allow us to move.

### Body systems 1

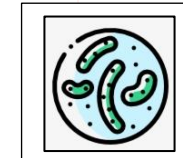
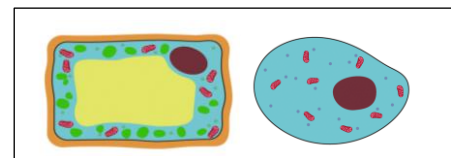
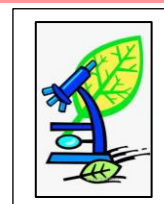
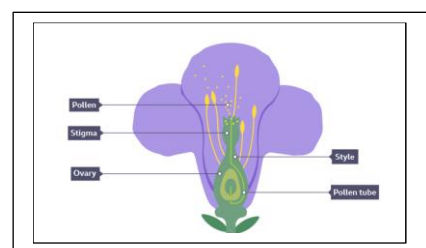
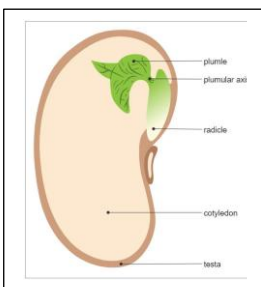
Levels of organisation. Gas exchange, lung structure and breathing.



### Cells

What plant and animal cells are made of. How substances move in and out of cells. Unicellular organisms.

Year 7



### Y7 & 8 Online textbook:



TEACHER ✓  
STUDENT ✓