



Gordon's School PSHE + Citizenship

Key Stage 5 - Curriculum Map



Key Words / Skills:

- Positive relationships
- Managing your mental health
- First Aid
- Personal responsibility and choices
- Drug misuse
- Addiction
- Sexual Health
- Relationship challenges
- Career and employment
- British Values



Exams

Relationships and Sex Education | Citizenship

Fertility and impacts on it, Pregnancy and miscarriage, series of topical Citizenship debates focusing on key themes

Financial decision making | Next steps & employability

Personal finance, preventing ID fraud and theft, PAYE/ Taxes/ Payslips, employability & interview skills



Year 13

Relationships and Sex Education | Intimate relationship challenges

Identifying unhealthy relationships, coercive control, managing unwanted attention, online abuse and blackmail, revenge pornography

Respect and British Values | Health & wellbeing, staying safe

Prevent strategy, Radicalisation, Developing healthy lifestyles, managing stress through exams, revisiting misuse of drugs, festivals behaviour

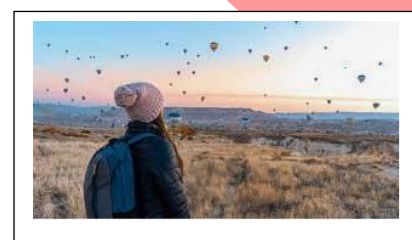


Respect and British Values

FGM, Forced marriage and Honour killings, Understanding extremism, Divisive language, Radicalisation, Preventing extremism

Staying safe | Health and Wellbeing

Revisiting Drug and alcohol misuse, FGM, Forced marriage and Honour killings, Revisiting consent, First Aid

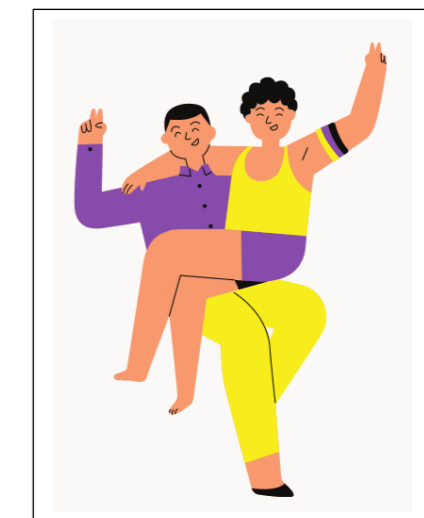


British values and citizenship |

Ethics and Fair Trade, Ethical consumerism, LGBT Rights, Neurodiversity Fake news and critical thinking,

Financial decision making | Next steps & employability

Personal finance, employability, interview skills, enterprise, online reputation in the workplace



Year 12

Mental Health & wellbeing | Respect and British Values

Mental health, Dealing with anxieties, developing resilience, Suicide awareness, Gender bias, Toxic and positive masculinity

Relationships and Sex Education | Intimate relationship challenges

Positive intimate relationships, Crossing the line with sexting, Consent, Revisiting contraception,

