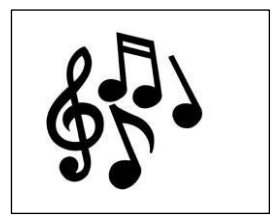




Gordon's School Music Department



GCSE - Curriculum Map

Key Words / Skills:

- Melody
- Articulation
- Dynamics
- Time / Tempo
- Structure
- Harmony and Tonality
- Instruments
- Rhythm
- Texture
- Composing Skills
- Performance Skills



Listening & Appraising Music

Revisiting and retrieving theory and set works information in preparation for your exam at the end of the course



Solo & Ensemble Performance Recordings

Solo and ensemble performances will be completed and recorded for coursework

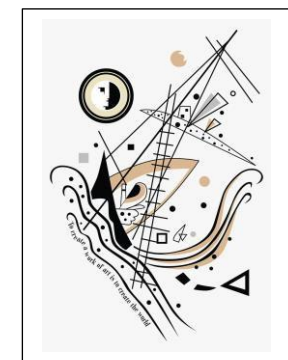


Finalise your composition ready to submit for your coursework



Western Classical Music Since 1910

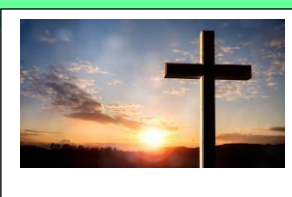
Key composers include Adams, Reich, Janacek, Bartok and Tavener



Year 11

Ensemble Performance

Start working on your performance and rehearsing the material you want to perform with others



Romantic Piano Music and the Requiem

Analysis of two key genres of the Romantic period



Contemporary British Folk Music

Exploring the storytelling tradition of folk music

Gaming and Film Music
Revision of the work done in Y9 and how it relates to gaming music



Latin American Music

Playing, composing and analysing the key features of Latin music, including Salsa, Samba and Tango



Fusion Music: Caribbean
Analysis of the music of Reggae and Calypso



Set Brief Composition

set by to ion 2



Blues Music

Revision of the work done in Y8 along with some improvisation



Broadway Musical

Alongside our study of LSOH, we analyse the features of musical theatre song



Rock Music

Exploring the rock music of the 1960s and 70s

Queen - 3 songs

Developing your knowledge of this area of study.



Year 10

Performing Skills for GCSE Music

Introducing GCSE performance skills and starting two years of developing solo and ensemble pieces



Revision of the elements of music; fundamental to the analysis of music.



Baroque Coronation Anthems

Analysis of music by Handel and Purcell



Beethoven Symphony No 1 The first movement of this work is one of our set works.



Exam Specification:

Exar



Should this QR code not work, please click [here](#) for the relevant specification.