



Gordon's  
Sixth Form

# Photography

*AS Level and A2 Level*

## What will I learn on this course?

### You will be taught to develop:

- Your imaginative and creative powers
- Your personal viewpoints
- Your practical skills
- Your experimental skills
- Your analytical and documenting skills

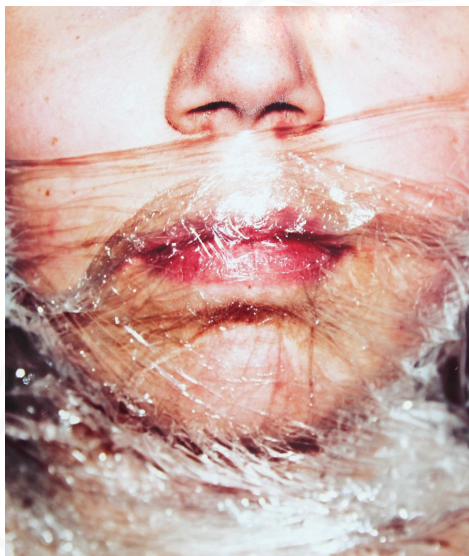
### What other skills will I develop by doing this course?

As well as covering the A Level study of Art and Design, the key skills that you will develop are:

- Summarise the information found in many types of sources - eg books, paintings, museums, galleries, the internet.
- Use accurate and relevant information and develop your presentation skills.
- Make sure that written work is legible and its meaning clear.
- Information technology.
- Problem solving.

## Assessment Objectives

<b>AO1</b>	<b>DEVELOP</b> ideas through sustained and focused investigations informed by contextual and other sources, demonstrating analytical and critical understanding.
<b>AO2</b>	<b>EXPLORE</b> and select appropriate resources media, materials, techniques and processes, reviewing and refining their ideas as their work develops.
<b>AO3</b>	<b>RECORD</b> in visual and/or other forms ideas, observations and insights relevant to their intentions, demonstrating an ability to reflect on their work and progress.
<b>AO4</b>	<b>PRESENT</b> a personal, informed and meaningful response demonstrating critical understanding, realising intentions and, where appropriate, making connections between visual, oral or other elements.



## Year 12 Course Details

### Examination

The course is examined at the end of Year 12 for AS Level and at the end of Year 13 for the full A Level.

### Component 1: Personal Investigation (Y12 50%)

This component incorporates three major elements: supporting studies, practical work. The Personal Investigation is internally set and assessed, and externally moderated.

### Component 2: Externally Set Assignment (ESA) (Y12 50%)

This component incorporates two major elements: preparatory studies and the 10-hour period of sustained focus. The ESA comprises an externally set theme which students will need to develop their own personal work from. The ESA will be available from 1 January. Students then begin their preparatory studies, culminating in the final 10-hour period of sustained focus under examination conditions.



## Year 13 Course Details

### Component 1: Personal Investigation (Y13 60%)

This component incorporates three major elements: supporting studies, practical work and a personal study\* of continuous prose. The purpose of the Personal Investigation is to develop a portfolio of practical work and a continuous prose that shows critical understanding in relation to the practical portfolio. The Personal Investigation is internally set and assessed, and externally moderated.

*\*The personal study comprises 12% of the final qualification and is marked out of 18.*

### Component 2: Externally Set Assignment (ESA) (Y13 40%)

This component incorporates two major elements: preparatory studies and the 15–hour period of sustained focus. The ESA comprises an externally set theme which students will need to develop their own personal work from. The ESA will be available from 1 February. Students then begin their preparatory studies, culminating in the final 15–hour period of sustained focus under examination conditions.

## Degrees

- Photography
- Cinematography
- Film and media
- Film production
- Fashion
- Creative arts
- Media
- Film and TV makeup
- Graphics
- Film and TV studies
- Fashion branding and communication
- Films and visual effects technology
- Wildlife and media
- Computer games and story development
- Marine and natural history photography
- Photojournalism

## Transferable skills

Understanding of hardware and software, analysing, evaluating, researching, problem solving, experimenting, presenting, refining, planning.



*Gordon's School  
Bagshot Road  
West End  
Woking  
Surrey  
GU24 9PT*

*[www.gordons.school](http://www.gordons.school)  
01276 858084*