

# DAY AND RESIDENTIAL BOARDING

---

*STUDENT  
HANDBOOK*



# CONTENTS:

Boarding Aims.....	5
Boarding Statement.....	5
Accommodation.....	6
<i>Accommodation – Residential Boarders</i> .....	6
<i>Accommodation – Day Boarders</i> .....	6
<i>Aerosols</i> .....	6
<i>Electrical Appliances</i> .....	7
<i>Devices</i> .....	7
<i>Damages</i> .....	7
<i>House Visiting</i> .....	7
<i>Searches for illegal items</i> .....	8
An Active Life.....	9
<i>Ball Games</i> .....	9
<i>Fitness Suite</i> .....	9
<i>Saturday School</i> .....	10
Appearance & Clothing.....	11
<i>Body Piercing &amp; Tattooing</i> .....	11
<i>Boots (for sport)</i> .....	11
<i>Hair (All students Y7-13)</i> .....	11
<i>Labelling</i> .....	12
Uniform.....	12
<i>All Students</i> .....	12
<i>Main School (Y7-11)</i> .....	12
<i>Sixth Form Students Only</i> .....	13
<i>Blazers-off</i> .....	14
<i>Hoodies</i> .....	14
<i>Uniform from Easter to September Exeat</i> .....	14
<i>Uniform from September Exeat to Easter</i> .....	15
<i>Sports Kit</i> .....	15
Ceremonial.....	16
<i>Annual Inspection</i> .....	16
<i>Blues</i> .....	16
<i>Drill Practice (Marching)</i> .....	16
<i>Parades</i> .....	16
<i>Memorial Weekend</i> .....	17
Communication.....	18
<i>Absence (Day Boarders)</i> .....	18
<i>Off-Games / P7 / PE</i> .....	18
<i>Post</i> .....	19
<i>Complaints</i> .....	19
Firefly.....	20
Property.....	21
<i>Mobile Phones</i> .....	21
<i>Mobile Phone Etiquette</i> .....	22

<i>Lost Property</i> .....	22
<i>Money</i> .....	23
<i>Passports</i> .....	23
Residential Boarding.....	24
<i>Roll Call</i> .....	24
<i>Curfew</i> .....	24
<i>Bed Times</i> .....	24
<i>Laundry</i> .....	25
<i>Leave-out</i> .....	25
Right Time, Right Place.....	27
<i>Daily Routine</i> .....	27
<i>Break Time</i> .....	28
<i>Food</i> .....	28
<i>Leaving the School site during the day</i> .....	28
<i>On-site after Prep at weekends</i> .....	29
<i>Out of Bounds Areas</i> .....	29
<i>Public Houses</i> .....	29
Student Life.....	30
<i>Internet</i> .....	30
<i>Prep</i> .....	30
<i>Prep on Friday 6.00 - 7.00pm</i> .....	30
<i>Rewards</i> .....	31
<i>Sanctions</i> .....	31
<i>School Detention Friday 5.00 - 5.45pm</i> .....	32
<i>Prep Detention Daily at lunch times</i> .....	32
<i>Community Payback</i> .....	32
<i>Substance Abuse</i> .....	32
<i>Bicycles</i> .....	32
<i>Driving</i> .....	33
<i>Pick-up Times</i> .....	33
Student Safety.....	34
<i>Alarm - Fire Evacuation</i> .....	34
<i>Alarm - Lock down</i> .....	34
<i>Bridge</i> .....	34
Student Voice.....	35
Student Welfare.....	36
<i>Bullying</i> .....	36
<i>Chapel</i> .....	36
<i>Prayer/Quiet Room</i> .....	37
<i>Child Protection &amp; Safeguarding</i> .....	37
<i>Doctors/Dentists</i> .....	37
<i>Medical Issues</i> .....	37
<i>Medicines</i> .....	38
<i>Medical Centre Opening Times</i> .....	38





# BOARDING AIMS

## Boarding Aims

*Through our character values we aim for you to:*



- **Connect** by building positive relationships with your peers, with the school staff and with the wider community;
- **Get Active** by engaging with all the opportunities available to you;
- **Learn & Achieve** by setting aspirational goals and learning new skills;
- **Give** selflessly by developing a sense of philanthropy and duty;
- **Appreciate** by finding happiness in what you have and earning what you desire.

## BOARDING STATEMENT:

**Our aim is to develop world class, world citizens: students with the confidence, character and capabilities to become the best they can be. To help and inspire all students to discover and develop their talents and interests to the highest standard possible and go on to lead fulfilled lives, enjoy healthy lifestyles and make a positive contribution to the lives of others. Such students lead happier lives.**



### **Accommodation – Residential Boarders**

Dorms must be kept tidy and orderly at all times.

Beds in Residential Houses must be made in the morning and the room must be left in an acceptable state before leaving at 8.15am.

Posters and any other personal effects must be appropriate and non-offensive. Houseparents will make the final decision as to what is appropriate and acceptable.

Day Boarders are not allowed into sleeping areas without the permission of Houseparents.

### **Accommodation – Day Boarders**

Sixth Form study rooms must be kept tidy and orderly at all times.

Posters and any other personal effects must be appropriate and non-offensive. Heads of Houses and Houseparents will make the final decision as to what is appropriate and acceptable.

### **Aerosols**

Aerosols are strictly banned in school and in all Day and Residential Houses. The only exception to this is when being used under staff supervision; eg before a parade, in the art department etc.

## **Electrical Appliances**

All appliances and devices which are to be plugged into electrical sockets in school, including Residential Houses, must be PAT-tested. Any new items brought into school during the year must be brought to the House Office for staff to record.

Students must not have any appliance with a heating element (eg kettles, toasters, rice-cookers, fan- heaters etc) in their rooms. This includes fridges and freezers. The only exception to this is a hairdryer or hair-straighteners.

Students must not have televisions or fridges in their dormitories or study rooms.

## **Devices**

KS3 & 4 students must not have electronic devices, including tablets or mobile phones, in their dormitories at any time unless with specific permission from a Houseparent. This rule extends to any washing or changing areas anywhere in the school, including Day House locker rooms, except when storing a tablet safely in a locker.

## **Damages**

Damages, caused deliberately or by misadventure, must be paid for by the student or students responsible for the damage. In such cases, a charge will be raised by the Finance Office.

## **House Visiting**

Students, irrespective of gender, are allowed into the respective Day House Common Rooms (on any floor) of other houses during break and mealtimes. All students entering another house must sign in or make themselves known to a member of staff.

Each Residential House has a designated area for mixed-gender visits and socialising.

Sixth form Day Boarders may visit study rooms in other houses of the same gender at any time, with permission of the House staff. Male and female students wishing to study together, may do so in common rooms only with permission from House staff, or may use the Library.

No students from any other house are allowed into residential house dormitories.

## Searches for illegal items

Students may be asked to reveal the contents of bags or pockets. Where a student refuses this request, a parent, or in some cases the police, will be called to conduct the search.

Staff may conduct any search of any facility, desk, drawer or locker that belongs to the school without the student's permission. Where reasonable to do so, a student may be asked to be present during a search.







## **Ball Games**

Ball games can take place on the Front Field or when supervised on the Back Field and Astro Pitch. Balls may only be thrown, not kicked, on the Parade Square.

## **Fitness Suite**

All Day and Residential Main School and Sixth Form students may use the Fitness Suite between 7am and 7.30am Monday to Friday. This provision is free of charge.

Students must see the Elite Performance Manager to arrange induction training, and parents will be required to sign a permission form.

Sixth Form students who have been successfully inducted may use the Fitness Suite during Private Study periods between 8.40am and 3.35pm, and between 5.00pm and 6.00pm, with or without staff supervision, so long as two additional students are also present (see separate weekend rule below). This use is not permitted if an instructor-led session or PE lesson is taking place at the same time in the Fitness Suite.

It is also available to all Residential Boarders and Sixth Form Day Boarders between 7.30pm and 9.00pm Monday, Wednesday and Thursday.

Students must not use the Fitness Suite alone. Two additional students must always be present

Students must wear branded shorts or leggings and a branded top when using the Fitness Suite between 7.30am and 7.30pm. (Students may wear any suitable clothing between 7am and 7.30am, and between 7.30pm and 9.00pm).

## **Saturday School**

Sport and physical activities take place on a Saturday morning and all Main School students must attend. Training will typically run between 10.00am and 12.00pm, though some fixtures may start earlier and finish earlier or later. Both Day Boarders and Residential Boarders may return home or to their Residential Houses once their Saturday morning commitment has finished.

Students are expected to fulfil all school commitments before taking part in any external weekend activities or playing for any external clubs.





### Body Piercing & Tattooing

Students must not display any piercings (other than in the ears) or tattoos at any time during the school day. Students in Years 7-11 may wear one pair of discreet stud earrings, one in each lower ear lobe only. Students in the Sixth Form may wear multiple earrings provided they befit a professional working appearance. A member of the Wider Leadership Team will rule on what is deemed acceptable.

### Boots (for sport)

Students must not wear boots with studs or spikes (football, rugby, cricket etc) to and from the sports fields. Students must wear shoes, trainers, sliders or other suitable footwear (not socks only) and carry their sports boots on such occasions.

### Hair (All students Y7-13)

- Students must not colour their hair an unnatural hair-colour, nor cut their hair in any way considered extreme. Students must not cut or colour each others' hair.
- Boys' hair must not be too long (below the collar) or excessively short (beyond a grade 2 as a guide), or unnaturally coloured. The back and sides must be blended with the top, to avoid an extreme 'step' or contrast.
- Girls' hair should be neat, and not excessively short, shaved or unnaturally coloured.
- Y7-11 girls with long hair must have it all tied back behind their head with a plain, dark or neutral band.
- All facial hair must be neatly-trimmed at all times in a professionally presentable fashion.
- **Senior Staff will rule on what is deemed acceptable.**

## Labelling

All items of school uniform, including sports kit must be labelled with the student's name.

## Uniform

### All Students

- The top button of the shirt must be fastened at all times.
- Shirts must be tucked in, not “folded” or hanging out. Please ensure your child's shirt is long enough to tuck into the waistband of skirts/trousers.
- In hot weather, long shirt sleeves may be folded neatly at the elbow. Short sleeved shirts and blouses are permitted.

Gordon's School has an outstanding reputation for high standards and expectations. This also applies to school uniform. Students are expected to adhere to these standards and school uniform is to be worn during normal school hours and during prep. The following details should be noted:

### Main School (Y7-11)

- Main School students must wear school uniform at all times during the school day between 7.30am and 7.30pm, unless in sports kit for a physical activity.
- Ties should reach just above the waistband.
- Skirts must be of an acceptable length at all times. Students will be asked to replace any ill-fitting skirts. For guidance, skirts must be on or slightly above the knee.
- Trousers must be light grey and not tapered.
- Girls must wear white, unbranded, ankle socks (100 denier black tights from after Exeat in September until Easter). Boys must wear black or grey socks (not trainer socks).
- Shoes should be robust, plain and formal, of matt black polishable leather (not patent). “Ballet” style shoes are not allowed.
- Branded sports kit is acceptable when permission is given in order to facilitate a fixture or activity.
- Students may wear shorts or skorts in the Dining Hall in the Summer Term if in branded sports kit but must wear tracksuit trousers over the top in the Autumn and Spring Terms.
- Girls using the Fitness Suite or rowing ergos may wear lycra leggings, but must put on PE shorts/skorts or tracksuit bottoms immediately after the activity.
- Girls competing in athletics may wear lycra shorts, but must put on PE shorts/skorts or tracksuit bottoms immediately after the activity.
- Dark coats without a prominent logo may be worn in cold weather. The hood of a hoodie is not to be worn, except in extreme weather conditions (for example heavy rain, sleet, snow or hail).

- A fine neck-chain and a watch may be worn. Additional jewellery is not allowed.
- Nail varnish and make-up is not allowed.

### **Sixth Form Students only**

- Formal dress (or branded sports kit for sport) is to be worn during the school day. All Sixth Form students are required to dress smartly as if they were working in a formal office environment.
- Male students must wear a suit, a smart shirt and tie, and formal shoes.
- Female students must wear a two-piece suit with trousers or skirt, a top such that shoulders are covered at all times and smart shoes. Alternatively, students may wear a dress with a jacket. Skirts and dresses must be of an appropriate and decent length. A member of the Wider Leadership Team will rule on what is deemed acceptable.
- Dark coats without a prominent logo may be worn in cold weather. The hood of a hoodie is not to be worn, except in extreme weather conditions (for example heavy rain, sleet, snow or hail).
- Students may wear jewellery that is discreet and befitting a professional appearance. A member of the Wider Leadership Team will rule on what is deemed acceptable. Equally make-up and nail varnish must befit a professional appearance.
- Girls competing in athletics may wear lycra shorts, but must put on PE shorts/skorts or tracksuit bottoms immediately after the activity.
- Girls using the Fitness Suite or rowing ergos may wear lycra leggings, but must put on PE shorts/skorts or tracksuit bottoms immediately after the activity.



## Blazers-off

A notice will be posted on the Staff Room door when students are permitted not to wear their blazers. This will typically happen when it is considered too hot to wear them. Blazers must otherwise be worn at all times with school uniform, except in classrooms when the teacher has given permission for them to be removed.

## Hoodies

Students may travel to and from school with their hoodie (green school hoodie only) under their blazer. This must be removed when they arrive in House, and not put on again until they go home.

In cold weather, a notice will be posted on the Staff Room door to permit students to wear their green hoodie under their blazer for marching.

House hoodies may only be worn for Inter-House events and for Saturday morning school with tracksuit bottoms or sports kit.

The hood of a hoodie may only be worn over the head in extreme weather conditions and with permission from staff.

## Uniform from Easter to September Exeat:



## Uniform from September Exeat to Easter:



## Sports Kit:





## CEREMONIAL

### **Annual Inspection**

The Annual Inspection takes place in the summer each year and is the highlight of all the parades held throughout the year. As with all the parades, attendance by main school students is compulsory.

### **Blues**

Students are responsible for the maintenance, care and upkeep of their Blues Uniform, which is issued when joining the school. Blues must be kept in a suit-bag when not being worn. A Swap Shop operates at certain times of the year to exchange items of uniform for larger sizes as students grow through the school. The uniform must be returned to the school when students leave.

### **Drill Practice (Marching)**

This takes place for all main school students on Friday afternoons between 4.00pm and 5.00pm. Students are expected to wear school uniform and permission will be given in colder weather to wear hoodies underneath blazers if necessary. Coats must not be worn.

### **Parades**

There are six parades at school per year including the Patron's Parade. Additionally, all main school students attend the Annual Inspection in June.



## Memorial Weekend

All Year 9&11 students are expected to march at the Whitehall Parade in January, along with members of the Pipes & Drums band.

All students in Years 7-10 (including band members) are expected to attend the Guildford Memorial Service in Blues, irrespective of whether they attended Whitehall the previous day. This is optional for Year 11-13 students.

Parents are invited to both events on the Memorial Weekend





### **Absence (Day Boarders)**

**01276 858084 Option #1**

**[absence@gordons.school](mailto:absence@gordons.school)**

Parents must contact the School on either of the above by 9.15am to report that their child will be absent. Any absence notice not received will trigger an automatic request for information at 10.00am each morning. The reason for any absence must always be submitted in writing prior to the absence if known, or on the student's return to school.

### **Off-Games/ P7/ PE**

Day Boarders will need a signed note from home or a parental email if they are unable to take part in physical exercise.

Residential Boarders will need permission from the Medical Centre to excuse them from physical exercise.

Notes from home or the Medical Centre must be taken to the Co-curricular Coordinator prior to a Period 7 activity starting, or to a member of PE staff prior to a PE lesson starting.

## Post

Post sent to Residential Boarders must be clearly marked with the name of the student's House. For example;

*Student's Name  
Augusta House  
Gordon's School  
West End  
Woking  
Surrey  
GU24 9PT*



## Complaints

Students wishing to make a complaint should speak first to their Head of House to have it resolved. If not satisfied, students may complete a yellow complaint form and submit it to the Deputy Head (Pastoral). These forms and advice on the complaints procedure can be found in all houses.





## FIREFLY

This electronic platform is used for;

- Accessing prep information and deadlines
- Accessing curriculum material and subject pages
- Accessing marks and grades for assessed work
- Accessing House pages and House information
- Accessing pastoral information and support
- Accessing the timetable and school calendar
- Accessing links to school social media, news and stories
- Accessing attendance and behaviour profiles
- Accessing Honours Programme and Co-curricular information
- Writing personal development profiles in Year 7 and Sixth Form

Students must ensure they have a charged tablet or laptop at all times to access this information.





## Mobile Phones

Day Boarders in Years 7-11 may not bring mobile phones, or any device which accesses the internet other than their school-issued tablet, to school unless an arrangement is in place to store them in the House office.

Students in Years 12-13 may have their mobile phones in school. However, these must not be visible, audible or used during lessons unless the teacher has given permission to do so.

All Residential Boarders (Years 7-13) may bring mobile devices including phones into their Residential Houses. Students in Years 7-11 will have restricted access to their devices (as with Day Boarders) for use in the evening and at weekends only.

Mobile devices, other than school tablets with permission, must not be used in dormitories or washing areas at any time.

Residential Boarders in Years 7-11 must hand in all electronic communication devices overnight, 15 minutes before lights-out. Residential Boarders must not use electronic devices after lights-out.

Y7-11 Residential Boarders may have their phones after breakfast on Saturday, and after 09.00am on Sundays.

Residential Boarders in Year 7 are encouraged not to have access to their phone at any time until the first exeat. Year 7 Residential Boarders may use the office phone to contact home if they need to.

Any student can request to use the House office phone at any time, or request access to their phone to call home if deemed necessary to do so.

Students must not lend or borrow electronic devices and students must not use another student's device. The school does not accept any liability for loss or damage to devices and parents are asked to cover all devices on home contents insurance.

Under no circumstances may audio or visual recordings be taken of anybody, staff or students, without their permission.

Students are responsible for their phone at all times.

Students in breach of this etiquette may lose the privilege of having a phone in school.

## **Mobile Phone Etiquette**

### **Y7-11 Students**

- Y7-11 students must not have phones in school at any time - they must be handed in to Houses at the start of the day.
- Residential students may have their phones at 7.30pm until 30 minutes before lights-out each evening.
- Y7-11 students must keep phones in bags and out of sight during Saturday morning activities and fixtures, but may use them when travelling to and from their fixture or event.
- Y7-11 students must not take their phones on school visits or fixtures during the week, nor on some weekend or residential trips when specified.
- Students in breach of any of the above will have their phones confiscated by the Deputy Head (Pastoral) and will only be returned to parents at a mutually convenient time.

### **Y12-13 Students**

- No mobile phones visible or to be used in the Dining Hall, Chapel, Rec, 'Mobile-free Zones' in Houses or when walking between lessons.
- Students may only use phones in lessons, P7 or Saturday activities with the teacher's permission
- Mobiles must be on silent at all times, during lessons and school activities.

## **Lost Property**

Items of lost property may be reclaimed from the School Office.

Items of sports kit should be reclaimed from the PE Office.

## Money

Day Boarders should not bring large amounts of money into school. There may be occasions when small amounts will be necessary for charity events.

Residential Boarders must keep their pocket-money in the House bank and ask Houseparents for it as agreed with parents. Any small amounts stored in dorms must be locked away out of sight. Students are encouraged to use electronic banking where possible.

Students must not lend or borrow money.

## Passports

Passports of all international boarders must be kept securely in the House Office.





# RESIDENTIAL BOARDING

## Roll Call

Main School	07.30
All Years	21.00 (30 minutes later on Saturdays)
All Years	21.15 (Summer Term)

## Curfew

Main School	Autumn & Spring Terms	21.00
	Summer Term	21.15
Sixth Form	All Year	22.15

(30 minutes later on Saturdays)

## Bed Times for Residential Boarders

Year 7	Rooms 20.30	Reading Time 20.45	Lights out 21.00
Year 8	Rooms 21.15	Reading Time 21.30	Lights out 21.45
Year 9	Rooms 21.30	Reading Time 21.45	Lights out 22.00
Year 10	Rooms 21.30	Reading Time 21.45	Lights out 22.00
Year 11	Rooms 22.00	Reading Time 22.15	Lights out 22.30
Year 12&13	Rooms 22.30		Lights out 23.00

(30 minutes later on Saturdays)



## **Laundry**

Residential Boarders may deposit their clothes for laundering. See individual Houses for details. Clothes deposited for laundering must be clearly labelled or in a laundry-bag, and must be machine-washable on a regular cycle and must be able to be tumble-dried. The School will not accept responsibility for lost or damaged items except in extraordinary circumstances.

## **Leave-out (Exeat Weekends and End of Terms/ Half-Terms)**

For Full Residential Boarders, parents must notify Houseparents of the pick-up and return arrangements, and supervision arrangements for the period away from school during Exeat weekends and holidays.

## **Leave-out (Residential Boarders at weekends)**

All Full Residential Boarders wishing to go out overnight at the weekend must make arrangements with their Houseparents.

Parents must email, write or telephone to grant permission, before a Boarder is released from the School's Duty of Care. A Houseparent may still veto this permission if they feel that a child may be placed in danger, and the matter will be reported to the Deputy Head (Pastoral) for attention.

A Leave Form must be signed off by House staff 48 hours in advance in order for a Residential Boarder to stay away overnight on any night when they would normally be staying in school. This form requires staff to check permissions from both parent and host. Houseparents may grant the permission in loco parentis in extreme cases after checking with the host.

## **Leave-out (visits to friends' houses by Residential Boarders)**

Residential Boarders may visit the homes of friends living locally with the permission of their Houseparents.

## **Leave-out (weekend day-leave by Residential Boarders)**

- Y10&11 Day & Residential Boarders may visit local shops in West End on a Friday evening after marching until 6.00pm.
- Y7 Residential Boarders may visit local shops in West End at weekends in groups of 3.
- Y8 Residential Boarders may additionally visit Lightwater.
- Y9 Residential Boarders may additionally visit Camberley.
- Y10 Residential Boarders may additionally visit Woking.
- Y11-13 Residential Boarders may visit any of the above, and also Guildford.
- Students must behave as they are expected to in school, and all school rules are applicable. Students must not act or behave in any way that might be deemed a nuisance or anti-social and must not act in such a way as to bring the school into disrepute.





# RIGHT TIME RIGHT PLACE

## Daily Routine

07.00	Wake-up
07.30	Breakfast available to Residential Boarders
07.45	Day Houses open
08.20	Chapel / Assembly / House Meeting / Tutor Meeting
08.40	Period 1
09.35	Period 2
10.30	Break
11.00	Period 3
11.55	Period 4a / Lunch for Y7-10
12.50	Period 4b / Lunch for Y11-13
13.45	Period 5
14.40	Period 6
15.35	Break
16.00	Period 7
17.00	Tea

## Break time

Students may return to their Houses at Break in the morning and after Period 6. Snacks are available for Day and Residential Boarders at 15.35 in Houses.

## Food

### **Weekdays:**

07.30—08.00 Breakfast for Residential Boarders

11.55—12.50 Lunch for Y7-Y10

12.50—13.45 Lunch for Y11-Y13

17.00—17.50 Tea for all students

19.45 Snack for Residential Boarders

### **Weekends:**

09.00—09.30 Breakfast

12.30—13.00 Lunch

17.30—18.00 Tea

Students must assemble in year groups shortly before their published lunch time, and by House before the published tea time. Students must queue in an orderly fashion outside before being escorted in by staff.

Tuck Shops operate in all Houses. See individual Houses for details.

Kitchen facilities are available in all Houses. See individual Houses for details.

Students must not take hot food to their dorms or rooms.

Students must not eat whilst walking around the school.

## Leaving the School site during the day

Main School students must not leave the school site at any time during the school day. All Sixth Form and Main School Day Boarders must sign-out before leaving at the end of the day and may not come back on to site until the following school day, unless to attend a supervised, regulated activity, unless special permission has been granted by House staff.

Sixth Form students may sign-out during the school day to visit local shops in West End and must sign-in again on their return. Students must not use cars to visit these shops.

## On-site after Prep and at weekends

No Day Boarders are allowed on site after prep during the week unless attending a staff-supervised activity, or with the permission of a Residential Houseparent.

Similarly, no Day Boarders are allowed on site at the weekend unless attending a staff-supervised activity, or with the permission of a Residential Houseparent.

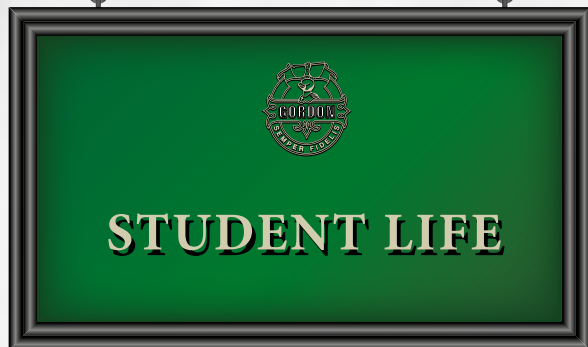
## Out of Bounds Areas

Areas designated as out-of-bounds to students are clearly marked on House notice boards. These areas are out-of-bounds at all times unless supervised by a member of staff.

## Public Houses

No Day or Residential Boarders in the Main School or the Sixth Form may visit any licensed property and consume alcohol whilst under the Duty of Care of the School, unless extraordinary permission has been sought from the Deputy Head (Pastoral).





## **Internet**

Wi-fi is available to all students using their school log-in details. Students must sign and adhere to the Acceptable Use Policy and must also follow the School's e-safety guidance. Students must not install or use VPNs on their tablets nor download them on to school machines.

## **Prep**

All students must be in uniform or Sixth Form formal attire for prep. Unless special permission has been given, sports kit is not to be worn.

Main school students will have 90 minutes of prep Monday through to Thursday (45 minutes in Year 7). All students are encouraged to stay in school for prep.

## **Prep on Friday 6.00 - 7.00pm**

This is silent time. Day Students may go to a designated room to read or complete prep. Residential students may stay in Houses to read, organise their spaces or complete prep in an allocated prep room. Electronic devices may only be used for prep purposes. Residential students staying in House may change into mufti.

## Rewards:

Behaviour		Reward
Outstanding contribution to school life	5	Colours, Honours, Annual Prizes
Effort grade average in top 25% / Full Pages	4	Certificate / letter home (Head)
Excellent contribution and effort	3	Postcard sent home
Good contribution and effort	2	Good Comment or Stamp
Helpful, attentive and polite	1	Verbal Praise
Level		

## Sanctions:

Behaviour		Sanction
Refusal, repeated disruption or high-level offence	5	Immediate referral to the School Office
Continued disruption	4	School Detention
Repeated or increased disruption	3	Remove from room for 5 minutes
Repeated disruption	2	Bad comment
Talking / low-level disruption	1	Verbal reprimand
Level		

## **School Detention Friday 5.00-5.45pm**

If a student reaches Level 4 on the Classroom Behaviour Management Protocol (see above), the teacher must put them in detention on Friday (this may be on Thursday if Friday is the start of an Exeat or holiday).

- The student must be clearly told they are in detention at 5.00pm and that they must therefore go to tea at 4.45pm
- The detention must be entered into SIMS

A member of staff may also issue a detention without warnings where they feel a student's behaviour is sufficiently inappropriate (mid-high level).

## **Prep Detention Daily at lunch times**

If a student fails to hand in a piece of prep at the required time they will be placed in a prep detention. The student is told the day they are to attend (face to face or by email/firefly). Prep Detentions for Y11-13 are at 11.45am-12.15pm, and Prep Detentions for Y7-10 are at 12.55pm-1.25pm.

## **Community Payback**

For many mid-level, anti-social offences, students will be required to serve a period of community payback during a lunchtime.

## **Substance Abuse**

The following applies at all times during the school day, on the way to or from school, or on any school trip or activity during term time or during the holidays:

Students must not possess or use tobacco or any smoking related materials or paraphernalia, including e-vaping materials;

Students must not possess or consume alcohol or any products containing alcohol;

Students are not allowed to return to their Boarding House in the evening after they have attended an event off-site where alcohol has been served;

Students must not possess or use any substance intended for human consumption that is intended to produce a psychoactive effect.

## **Bicycles**

Day Boarders may cycle to school, but must dismount and walk with the bicycle once on site. Storage facilities are available.

Residential Boarders may keep bicycles in school and these may be used with permission from the Houseparents.



Helmets must be worn at all times when riding a bicycle, and bicycles must be road-worthy.

## Driving

Year 13 students only may apply from Mrs. Byne, for a Parking Permit to drive to school and park in the school's carpark on the north side of the site. The School reserves the right to remove parking permissions if the student is considered unsafe, demonstrates any degree of dangerous or unlawful driving, or uses their car for any other reason than travelling to and from school at the start and end of the day, unless permission has been sought from the Head of House.

Students must not bring their cars onto the main school site except in exceptional circumstances and with permission from a member of staff.

If travelling in the car of a member of staff, students should always sit in the back seat, and whenever possible a third person should be present.

Students travelling in cars, minibuses or coaches must wear seatbelts at all times.

## Pick-up Times

Day Boarders in Sandringham, Khartoum, Gravesend and Buckingham, and girls with siblings in those Houses, must be collected at either 6.45pm or 7.30pm from the Library end of the Parade Square. Day Boarders in China, Kensington, Augusta, Victoria, Windsor and Balmoral (unless with siblings) must be collected from the Dining Hall end.

Students leaving before 6.00pm must be collected from the carpark on the north side of the site.

At the beginning and end of terms, pick-up on the Parade Square is staggered for Day Boarders to be collected first, and then afterwards for Residential Boarders.





### **Alarm – Fire Evacuation**

On hearing the school fire alarm (uninterrupted sirens) between 8.20am and 7.30pm, students must assemble in silence on the Front Field at their House assembly point.

At all other times after 7.30pm and at weekends, Residential Boarders must assemble at their House assembly point on the Parade Square. Day Boarders on site at this time must assemble in front of the School Office on the Parade Square

### **Alarm – Lock down**

On hearing the lock-down alarm (5 intermittent blasts), students must make their way immediately into the nearest building and lock doors and windows once everybody wanting to gain entry has done so.

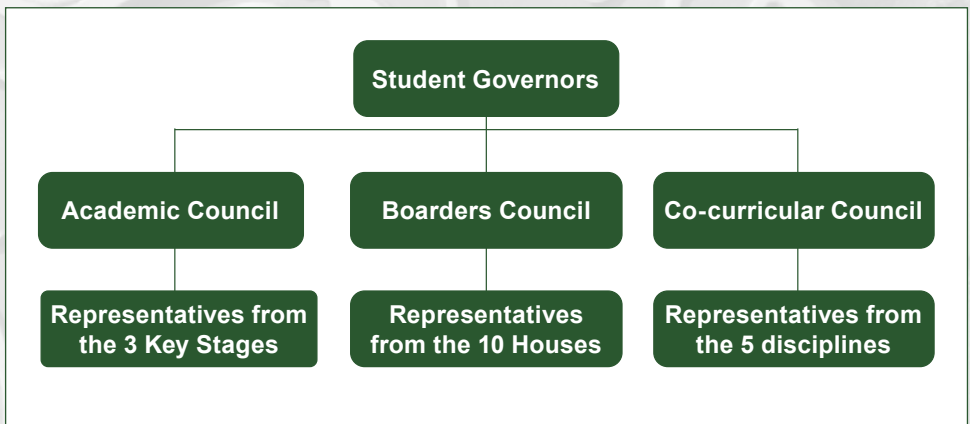
Students must remain locked in the building until they hear the fire evacuation alarm. Students will then assemble as per the fire evacuation above for a roll call.

### **Bridge**

Students must use the bridge at all times when crossing to and from the Back Field, the Band Room and other facilities on the north side of the school site.



# STUDENT VOICE





# STUDENT WELFARE

## **Bullying**

At Gordon's we believe that the starting point for combating bullying is to create a culture where bullying is unacceptable. Every student has a right not to be bullied. Every student has the right to be safe and happy at school, and to be protected when they are feeling vulnerable.

Students are encouraged to talk to a member of staff in the House at the earliest opportunity if they have any concerns about bullying.

Each House has 3 appointed Anti-bullying Ambassadors whom students can turn to for advice if they are being bullied, or if they are aware of any bullying.

Each House also has a box where students can post anonymous notes about any concerns they may have about bullying, or indeed anything at all. Students can also email the Head Boy or Head Girl using the link on the FireFly dashboard.

## **Chapel**

The Chapel is at the spiritual centre of the School, promoting Christian values, and recognising the values and teachings of all religions. Students attend Chapel once a week and on Parade Sundays when they have the opportunity to observe a Christian service or reflect upon their own individual beliefs.

Chapel is an important opportunity for the community to come together to celebrate its values.

## **Prayer / Quiet Room**

This facility in the vestry of the Chapel is available to all students. Students should speak to a member of House staff for access in the evenings and at weekends.

## **Child Protection & Safeguarding**

Students are encouraged to report any form of abuse they are aware of, or that they themselves are suffering from, to a member of staff at the earliest opportunity. Additionally, students can talk to the Deputy Head, the Designated Safeguarding Lead Claire Gill, or any of the Deputy-DSLs, Mrs Forster, Mrs Unsworth, Mr Sinclair or Mr King.

## **Doctors / Dentists**

**01276 858084**

Day Boarders must sign out and in to school at the School Office when attending appointments. Parents must call the above number to alert the School in advance if their child will be absent to attend an appointment.

Residential Boarders can be taken to appointments by school staff and a charge will be applied to cover the costs of this.

## **Medical Issues**

### **Day Students**

If students feel unwell, they should report to the School Office. During Periods 1&2, students may have a short period of rest in the School Office before returning to lessons, or parents will be called for the child to return home. After 10.30am, students may go to their House for a short period of rest before returning to lessons, or returning home with parents.

### **Residential Students**

As above, except during Periods 1&2 they may be sent from the School Office back to House to rest. If necessary, students may be referred to the Medical Centre.

## Medicines

Day Boarders must hand in all prescribed medicines, in their original boxes and named, to the Medical Centre. They will be administered from the Medical Centre, unless House staff are instructed to administer the medicine from the House.

Residential Boarders must hand in all prescribed medicines to the House Office on their arrival at school at the beginning of the week or term. These will be administered from the House Office and audited by the Medical Centre.

The only exception to this are asthma inhalers and epipens which students must carry with them at all times as directed.

## Medical Centre Opening Times

The Medical Centre is for use by Residential Boarders and Day Boarders with a Medical Care Plan only.

Medical Centre staff may be called to attend to any emergency medical situation.

Students **must not** arrive at the Medical Centre after 8.30am without a referral from a member of staff in the House or the School Office.

Residential Boarders only 8.00am — 8.30am

Residential Boarders and Day Boarders with a Medical Care Plan **by pre-arranged appointment only:**

**10.30am—10.50am**

**12.40pm—1.30pm**

**3.35pm—3.55pm**

**5.00pm—6.00pm**

**Saturday 9.30am—12.15pm**





Gordon's School  
West End  
Woking  
Surrey  
GU24 9PT

01276 858084  
[info@gordons.school](mailto:info@gordons.school)

