



Welcome to the Gordon's Sixth Form Open Evening 2019

“The sixth form is outstanding. Students make excellent progress and achieve high academic standards. They take advantage of a wide range of opportunities to develop leadership skills and the vast majority go on to secure places in higher education.” **OFSTED**



2001



2007



2009



2013



2014



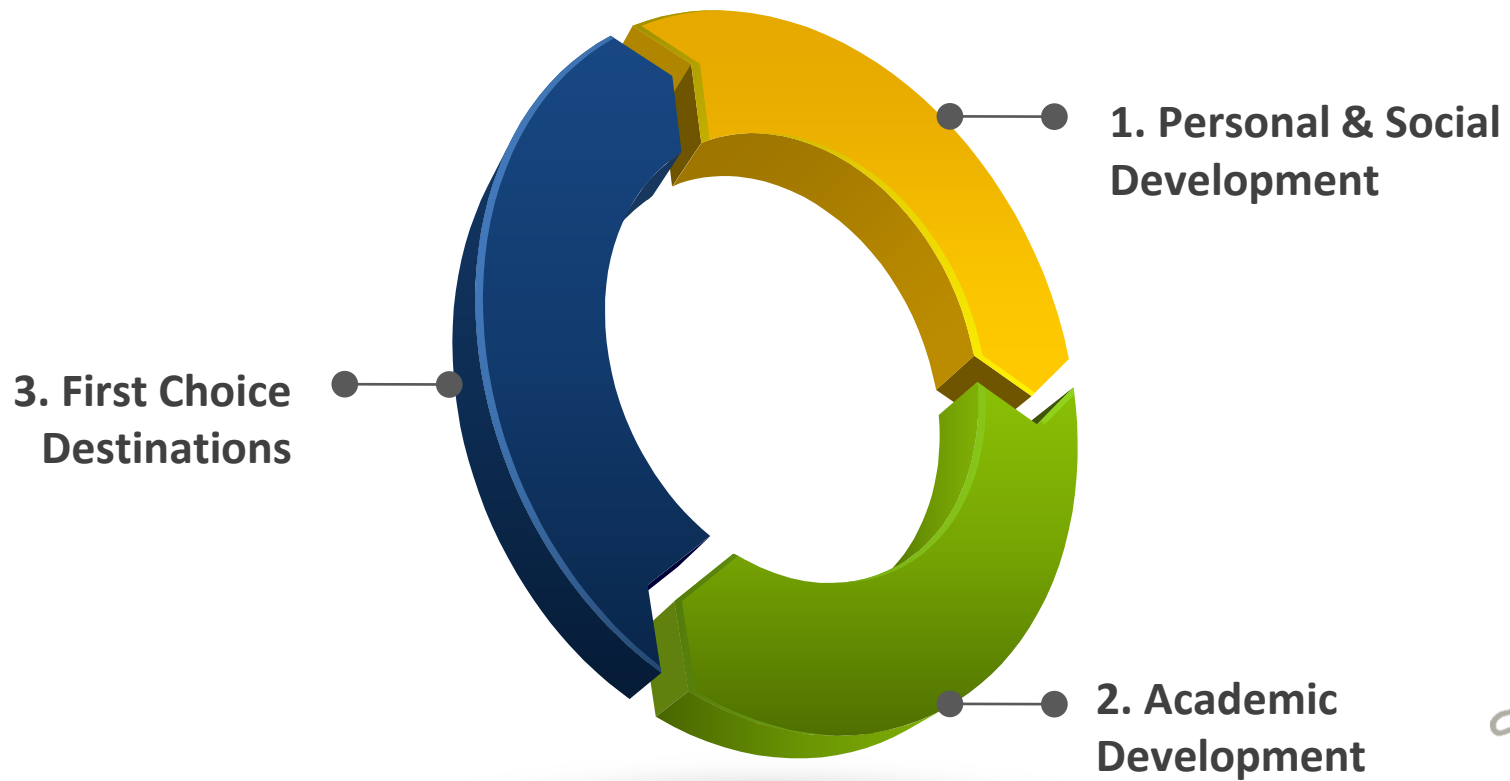
2017



2019



Sixth Form Aims





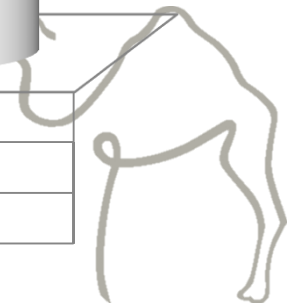
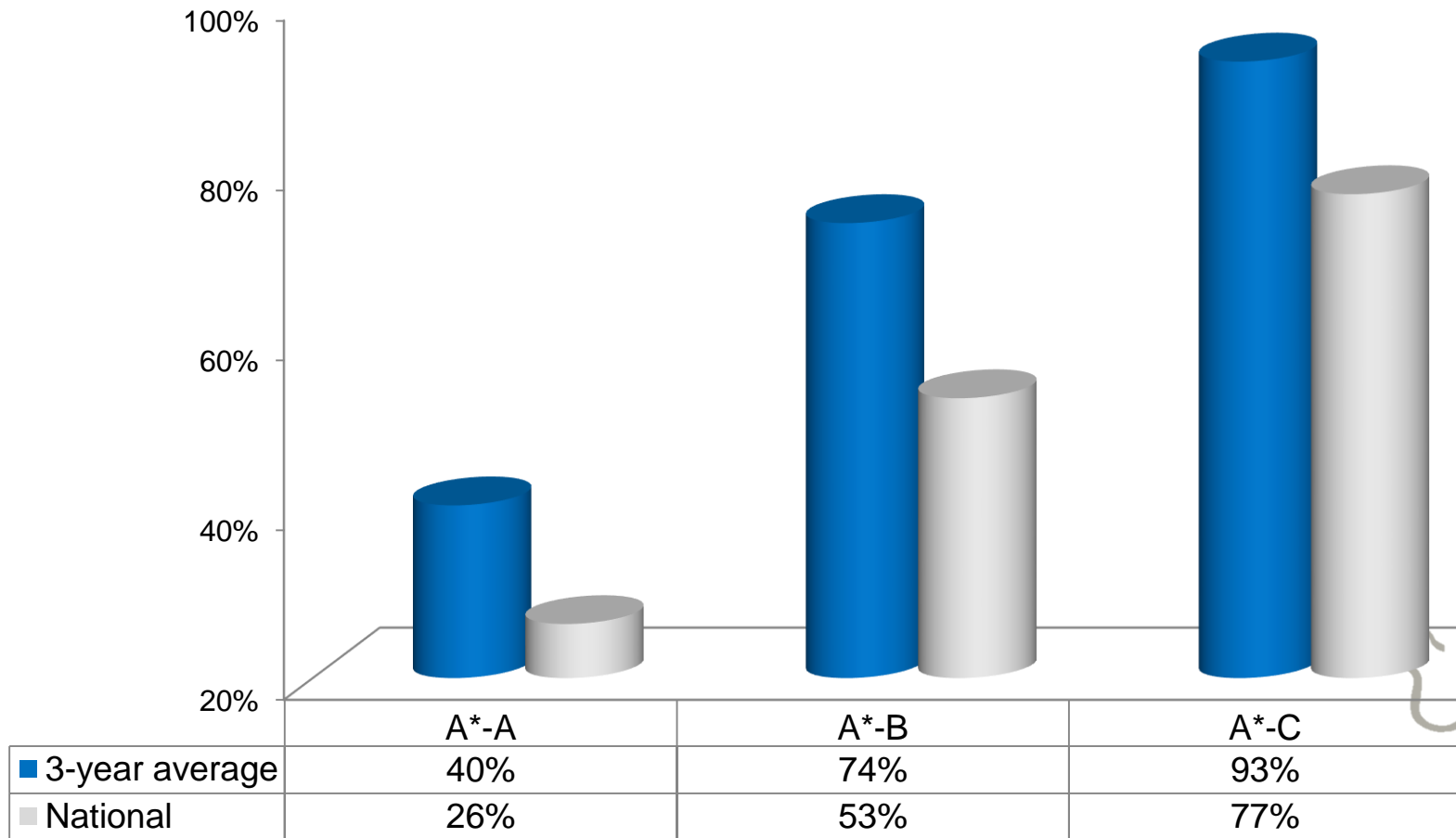
Headline Results

The very best possible examination results





Academic Attainment





Academic Attainment cont...

- **Extended Project Qualification (EPQ)**
- **A*-B pass rate**



2018-19





Academic Progress

Value-added

2019 DfE Performance Tables (state & independent)

1. **Top 100** schools in England (out of 4455)
2. **Top 10** schools in Surrey (out of all 108)
3. **Top 20** boarding schools in England
4. **Best** state boarding school in England





Destinations Data

60%

Russell Group

Preferred choice

84%

“Students at Gordon’s School are more likely to get into a top university than any other state school in Surrey”

DfE 2019





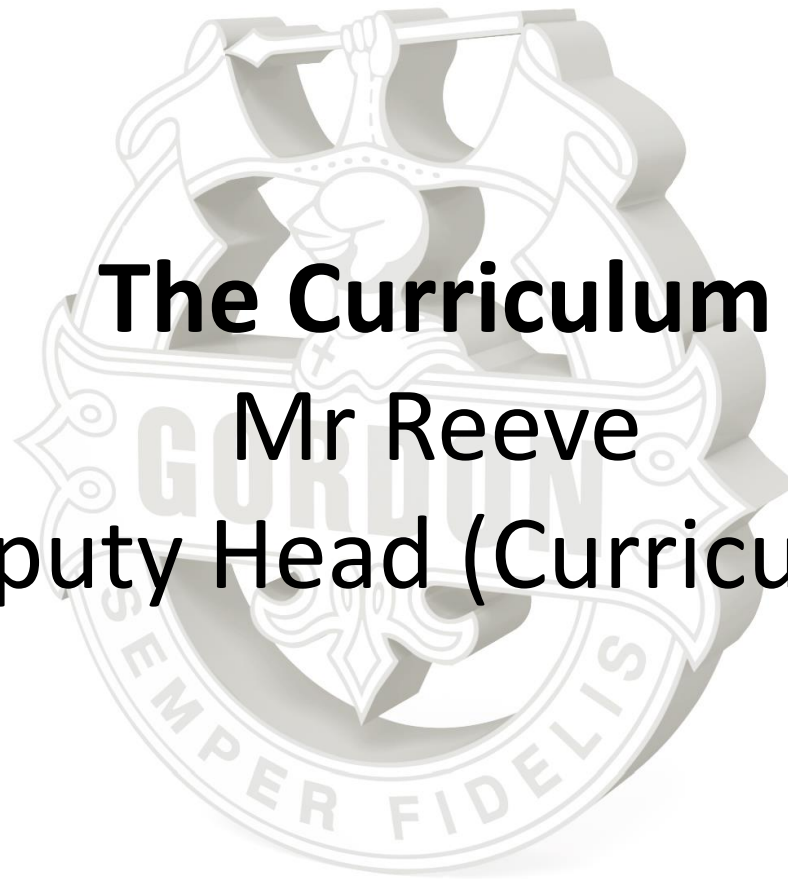
Finally...academic care

“We are completely thrilled with everything about Gordon’s, the way the teachers took such an active interest in ensuring he did as well as he could...

... I am 100% certain that he would not have achieved the grades he did without your help and for that I am truly grateful.”

Parent of Y13, 2019





The Curriculum
Mr Reeve
Deputy Head (Curriculum)





Curriculum

- **Flexibility** is key
- 3+1 Model
- Most students taking 3 A Levels
- However, 4 are possible
- Exams at the end of Year 13





Curriculum

- +1 Option suite of subjects taken in Year 12
- For those taking 3 A Levels
 - Extended Project Qualification
 - AS Mathematics
 - AS Sociology
 - An additional MFL
 - Sports Leaders assessment
 - Pre-U Global Perspectives
 - Politics (*not currently in the Options Booklet*)





PSHE and Liberal Arts

- A well-rounded PSHE programme – a thorough preparation for life beyond the school
- Liberal Arts – a thematic cross-curricular lesson covering many topic global issues





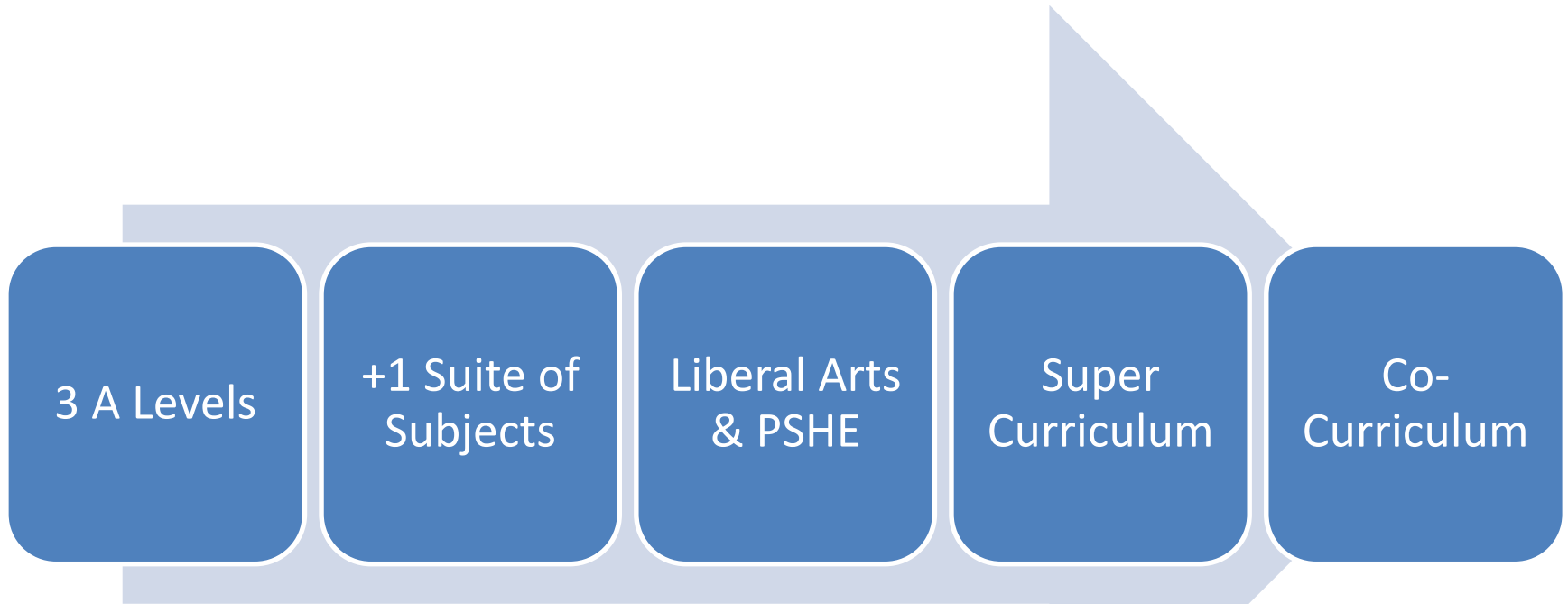
Super Curriculum

- Extending beyond the classroom
- National Competitions
- Online learning – Future Learn
- Discussion Groups
- Internal competitions
- Peer teaching





Curriculum





A more accessible curriculum

1. Double BTEC worth two A Levels:

- **BTEC Sport**

2. Single BTEC worth one A Level:

- **BTEC Business**





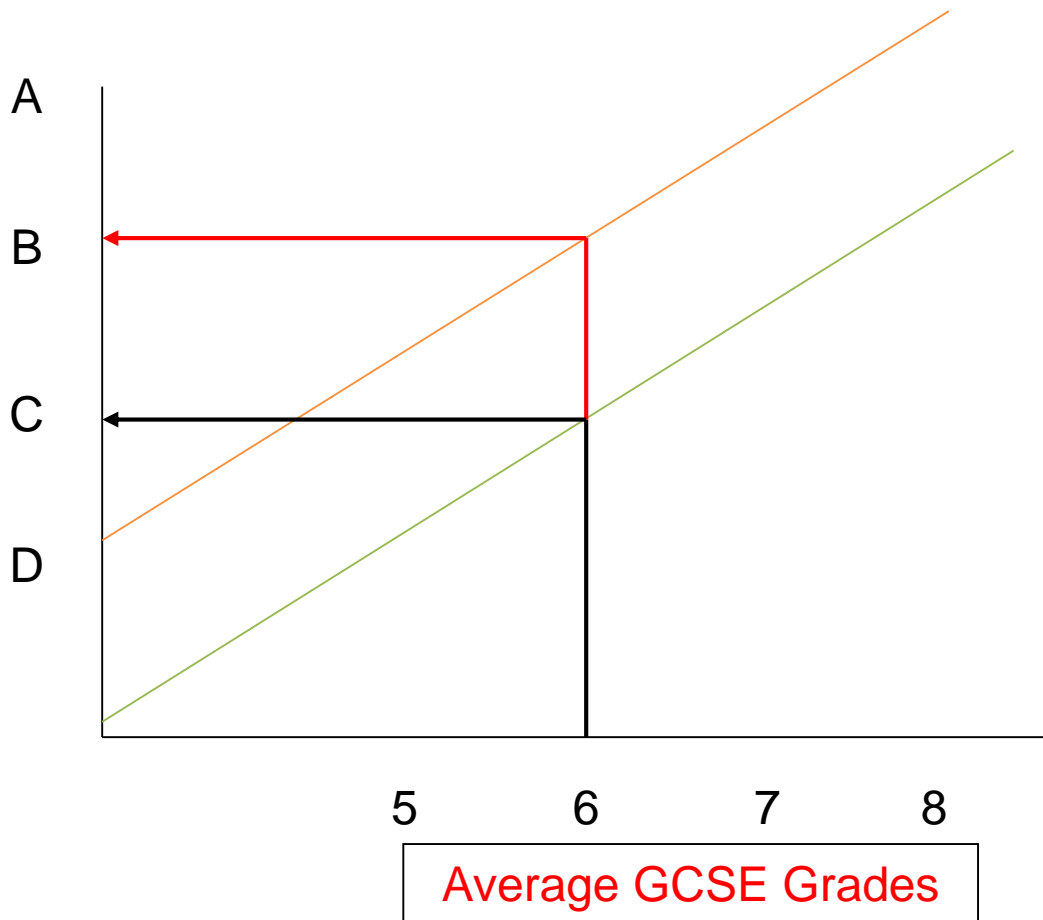
A Level Target Grades *'A Grade Higher'*





A Grade Higher

71% of students
obtained their
Target Grades in
2019



A Level
Grades

Average GCSE Grades





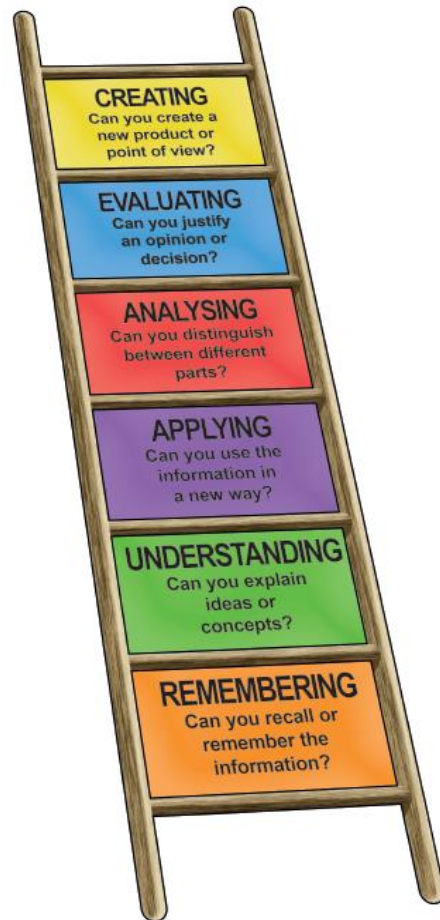
6 Reasons for success

1. Encouraging the students to be **aspirational** and develop a passion for learning e.g. Discussion Groups in subjects
2. Support with lunchtime and after school **clinics**
3. A* Clinics to **challenge** the most able
4. Pastoral support and **intervention** from Houses and a dedicated tutor team
5. Library **prep** available until 9pm
6. Regular **communication** home and **next steps advice**





A Thinking School





Entry Requirements

Minimum **of five 9-5 GCSE** grades including at least a **grade 5** in GCSE Mathematics & English for a pure A Level pathway

The subject specific grade criteria outlined on page 44 of the Gordon's Sixth Form option booklet

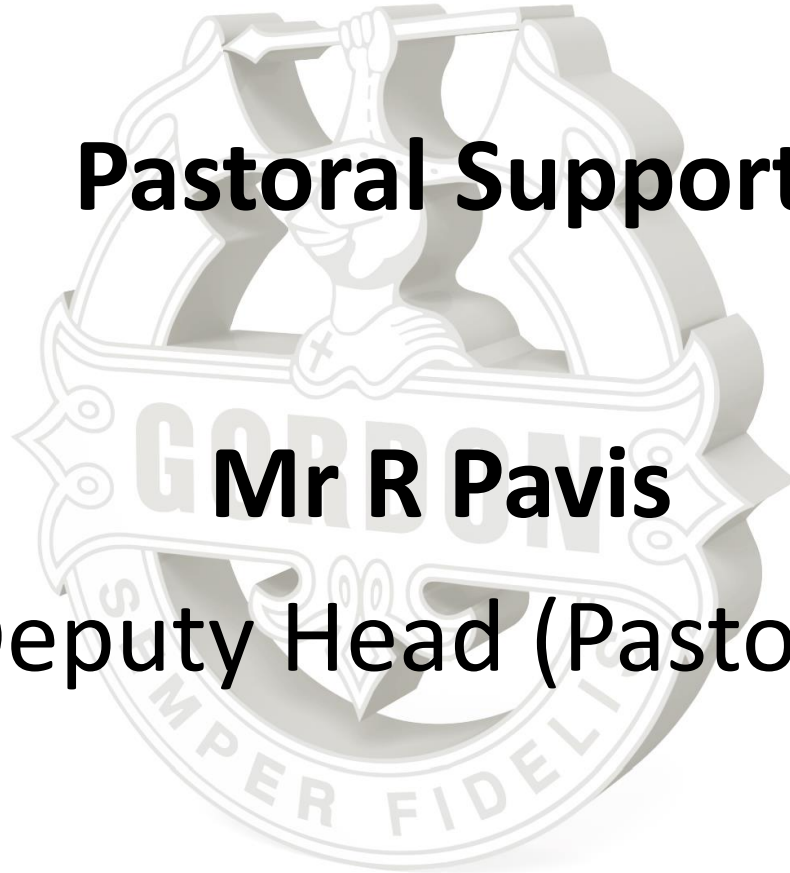




Pastoral Support

Mr R Pavis

Deputy Head (Pastoral)





The School Day

User Name: rpavis
Computer Name: RPAVIS-OFFICE

CHAPEL/ASSEMBLY/TUTOR	8.20am - 8.40am
PERIOD 1	8.40am - 9.35am
PERIOD 2	9.35am - 10.30am
BREAK	10.30am - 10.50am
PERIOD 3	10.50am - 11.45am
PERIOD 4	11.45am - 12.40pm
LUNCH	12.40pm - 1.45pm
PERIOD 5	1.45pm - 2.40pm
PERIOD 6	2.40pm - 3.35pm
PERIOD 7	3.55pm - 4.55pm
TEA	5.00pm





Pastoral Structure



CHINA

- 12/13CH
- 10/11CH
- 8/9CH



KHARTOUM

- 12/13KH
- 10/11KH
- 8/9KH



BALMORAL

- 12/13BA
- 10/11BA
- 8/9BA

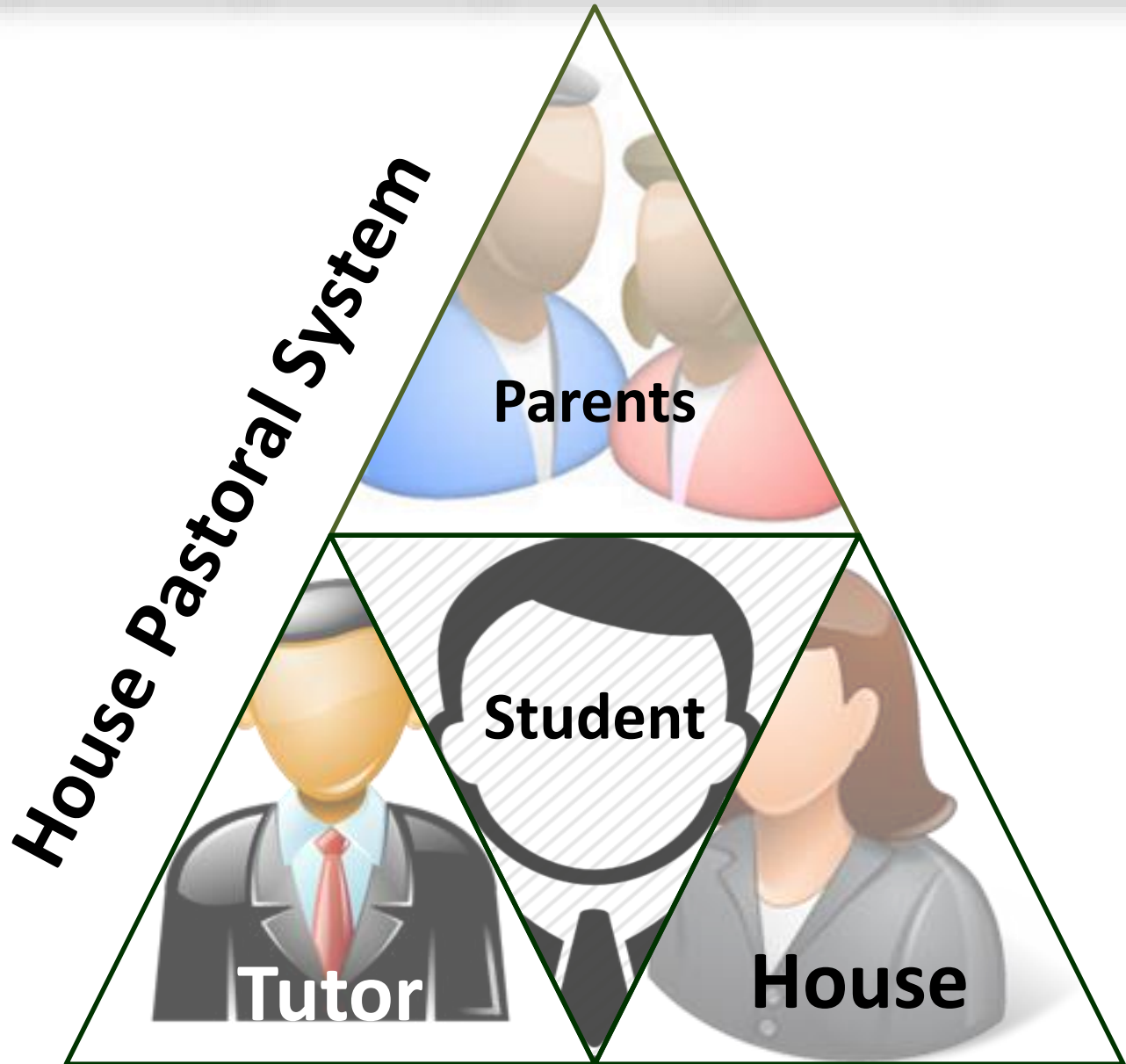
7A

7B

7C

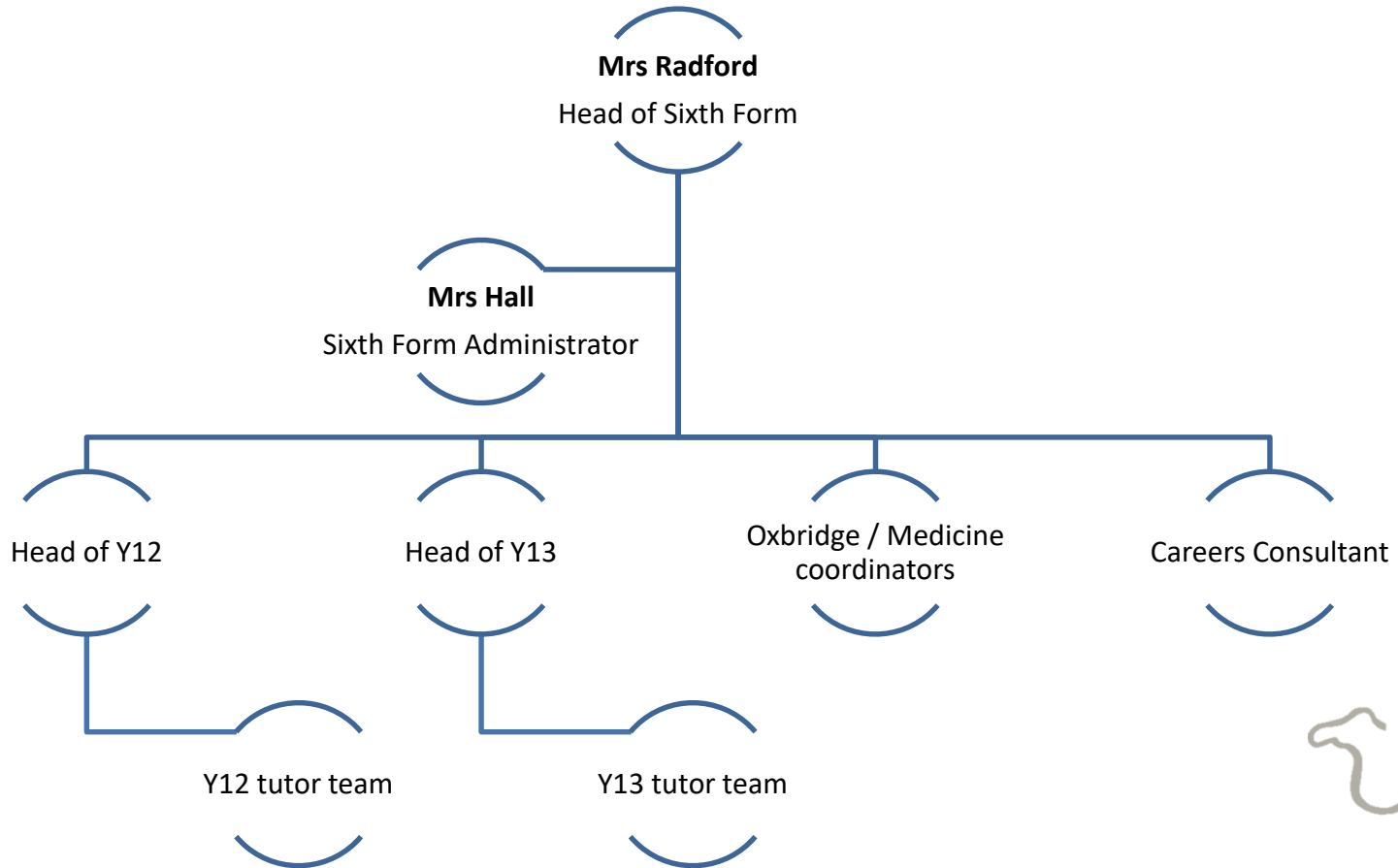
7D







Sixth Form Team





Some differentiators...

“Students respond very well to the culture of this school and contribute to it enthusiastically.”

OFSTED







What matters to employers?

World Challenge survey of over 500 of Britain's best known employers cited the following 4 areas which make candidates stand out from the crowd...

“Volunteering & Giving Back”

“Relevant work experience”

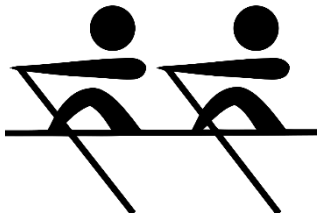
“Duke of Edinburgh Award”

“Co-curricular activities”





Team Sports



<http://artglobe.com/brushstrokes/> 80





Also available at Gordon's



Model United Nation





Healthy Mind, Healthy Body



Mental health & Well-being

1. Get Active
2. Learn & Achieve
3. Give
4. Appreciate
5. Connect





IT - BYOD





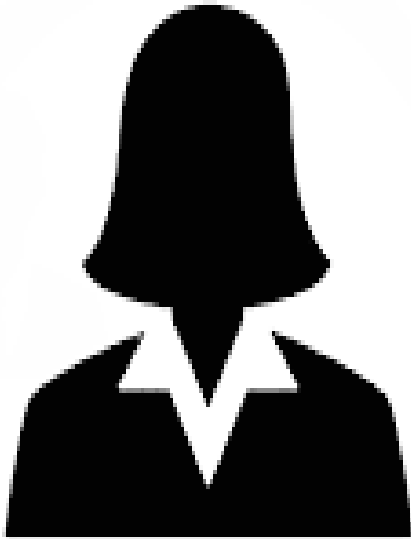
Preparation for after Gordon's

- HE launch evening and follow-up **HE Day** with students
- **Apprenticeships** pathways and advice
- **“Study Abroad”** roadshow: October
- **Finance** talk for parents
- Dedicated **UCAS, Medicine & Oxbridge** tutor support
- Y12 Work Experience placement service
- Specialised tools: **‘Unifrog’** subscription
- University & industry speakers
- **Personal statement** writing day



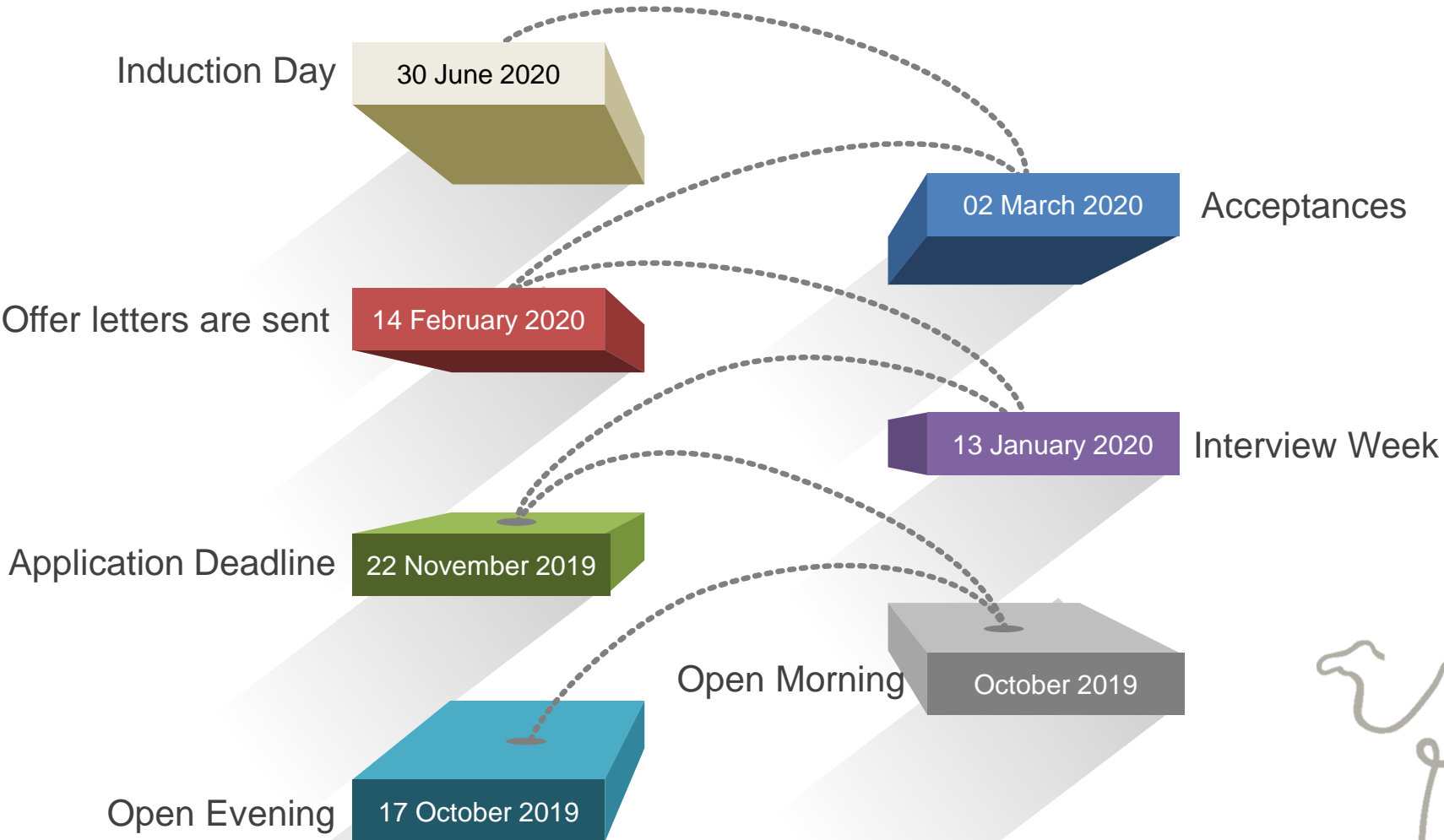


Student Experiences





Admissions Process



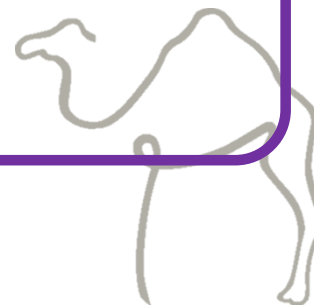


Entry Requirements

Minimum **of five 9-5 GCSE** grades including at least a **grade 5** in GCSE Mathematics & English **for a pure A Level programme**

plus

The subject specific grade criteria outlined in page 44 of the Gordon's Sixth Form option booklet





GORDON'S SCHOOL

◆ ◆ ◆
SPORT AND MUSIC
SCHOLARSHIP
◆ ◆ ◆





Final Word

- Mr Moss...





Challenge & Support

Happy students learn best and achieve more...



of all Year 13 Leavers in 2019 said they had a **positive** Sixth Form experience at Gordon's.



of Sixth Form students felt **well supported** since joining in September this year.





Why Gordon's

6 Reasons:

1. **Rigorous** A Levels and academic results that have real currency later in life
2. Great **teaching** and small average class sizes
3. **Structure** & House-based **pastoral** care
4. **Study** rooms
5. **Ofsted** outstanding (curriculum & boarding)
6. Abundant **co-curricular** opportunities that give students edges and builds character.



Sixth Form



Thank You

For your interest in Gordon's Sixth
Form

